

QUALITY AND INNOVATION



CATALOG 2024



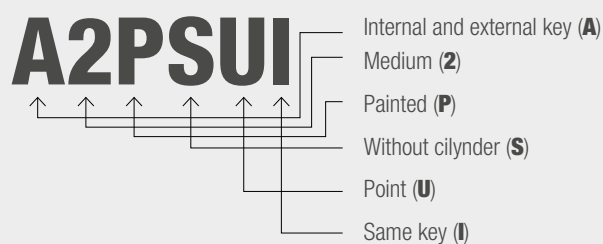
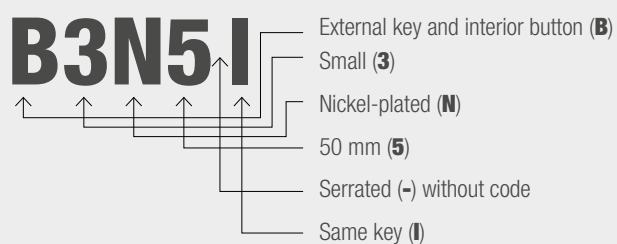
# CODE GUIDE

In order to optimise the use of this catalogue, the following is a series of concepts, each with a series of coded letters or numbers, which make up the references of our locks.

Concepts	MODEL	SIZE	FINISHING	CYLINDER	TYPE OF KEY	KEYS
Codification	Internal and external key (A)	Large (1)	Painted (P)	45 mm (-)	Serrated (-)	Different key (-)
		Medium (2)	Nickel-plated (N)	50 mm (5)	Point (U)	Same key (I)
	External key and internal button (B)	Small (3)	Rustproof (AN)	70 mm (7)		
		Pear (4)		90 mm (9)		
			Without cylinder (S)			
Reference	A	2	P	S	U	I

## Examples

We show two didactic examples for better understanding:



# INDEX

## INDEX CATALOGUE LOCKS

### **LOCKS SERRATED KEY ..... 4**

Locks model A serrated key ..... 5

Locks model B serrated key ..... 19

### **LOCKS KEY POINT..... 28**

Locks model A point key..... 29

Locks model B point key ..... 35

### **PRODUCTS MODEL C ..... 38**

Security padlocks serrated key..... 39

Security padlocks point key..... 40

Mortise locks 60/70 gold-coloured/nickel-plated with serrated key ..... 41

Mortise locks 60/70 gold-coloured/nickel-plated with point key ..... 42

Cylinder of 30x30 gold-coloured/nickel-plated with serrated key..... 43

Cylinder of 30x30 gold-coloured/nickel-plated with point key ..... 44

European profile security escutcheon..... 45

Side locks for roll-up doors with point key..... 46

Floor mortise lock square form with point key..... 47

Floor mortise lock round form with point key ..... 48

Locks for overhead doors ..... 49

Locks for gates with padlock serrated key ..... 50

Locks for gates with padlock point key ..... 51

Locks for gates without lock..... 52

Electric latches ..... 53

Doorknob handles ..... 54

Panels ..... 55

Kit of ironwork for overhead doors with springs ..... 56

Spearheads ..... 59



# LOCKS

## SERRATED KEY





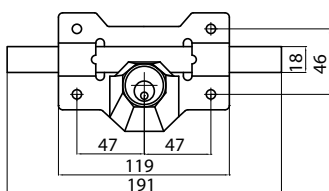
LOCKS SERRATED KEY

**MODEL**

**A**

REF	Model	Size	Finishing	Cylinder	Type of key
<b>A1P</b>	Internal and external key (A)	Large (1)	Painted (P)	Round 45 mm	-
<b>A1PI</b>	Internal and external key (A)	Large (1)	Painted (P)	Round 45 mm	Same key (I)
<b>A1P5</b>	Internal and external key (A)	Large (1)	Painted (P)	Round 50 mm (5)	-
<b>A1P5I</b>	Internal and external key (A)	Large (1)	Painted (P)	Round 50 mm (5)	Same key (I)
<b>A1P7</b>	Internal and external key (A)	Large (1)	Painted (P)	Round 70 mm (7)	-
<b>A1P7I</b>	Internal and external key (A)	Large (1)	Painted (P)	Round 70 mm (7)	Same key (I)
<b>A1P9</b>	Internal and external key (A)	Large (1)	Painted (P)	Round 90 mm (9)	-
<b>A1P9I</b>	Internal and external key (A)	Large (1)	Painted (P)	Round 90 mm (9)	Same key (I)

### Limitings



Compatibility with commercially available locks

### Packaging

Complete boxes are always supplied. According to cylinder size



#### Cylinder 45 / 50

10 and 20 units



#### Cylinder 70

10 and 20 units with cylinder of 70 mm



#### Cylinder 90

6 units with cylinder of 90 mm

### Box contents

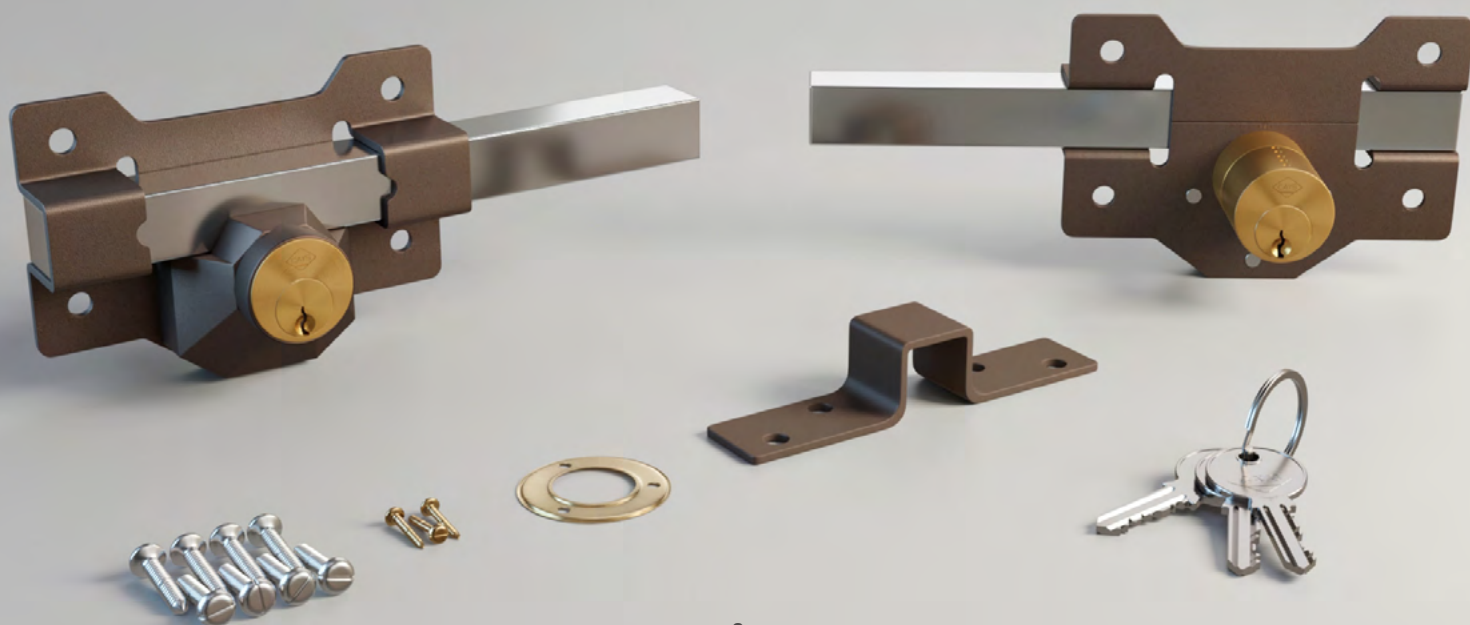
- 1 lock
- 1 latch
- 8 screws
- 1 trim
- 3 trim screws
- 3 brass keys



\*All locks can be supplied with the same key and in different models.

\*All locks can be supplied with different keys and a single master key.

\*These lock models can match the keys with our security padlocks, mortise locks 60 and 70 and our right and left gate locks.



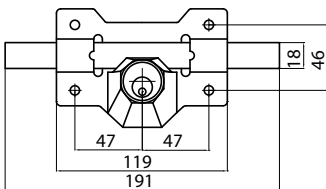
# A1N

## LOCK NICKEL-PLATED

### INTERNAL AND EXTERNAL KEY

REF	Model	Size	Finishing	Cylinder	Type of key
<b>A1N</b>	Internal and external key (A)	Large (1)	Nickel-plated (N)	Round 45 mm	-
<b>A1NI</b>	Internal and external key (A)	Large (1)	Nickel-plated (N)	Round 45 mm	Same key (I)
<b>A1N5</b>	Internal and external key (A)	Large (1)	Nickel-plated (N)	Round 50 mm (5)	-
<b>A1N5I</b>	Internal and external key (A)	Large (1)	Nickel-plated (N)	Round 50 mm (5)	Same key (I)
<b>A1N7</b>	Internal and external key (A)	Large (1)	Nickel-plated (N)	Round 70 mm (7)	-
<b>A1N7I</b>	Internal and external key (A)	Large (1)	Nickel-plated (N)	Round 70 mm (7)	Same key (I)
<b>A1N9</b>	Internal and external key (A)	Large (1)	Nickel-plated (N)	Round 90 mm (9)	-
<b>A1N9I</b>	Internal and external key (A)	Large (1)	Nickel-plated (N)	Round 90 mm (9)	Same key (I)

#### Limitings



Compatibility with commercially available locks

#### Packaging

Complete boxes are always supplied. According to cylinder size



##### Cylinder 45 / 50

10 and 20 units



##### Cylinder 70

10 and 20 units with cylinder of 70 mm



##### Cylinder 90

6 units with cylinder of 90 mm

#### Box contents

- 1 lock
- 1 latch
- 8 screws
- 1 trim
- 3 trim screws
- 3 brass keys



\*All locks can be supplied with the same key and in different models.

\*All locks can be supplied with different keys and a single master key.

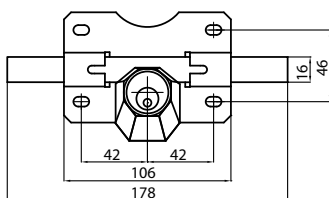
\*These lock models can match the keys with our security padlocks, mortise locks 60 and 70 and our right and left gate locks.



REF	Model	Size	Finishing	Cylinder	Type of key
<b>A2P</b>	Internal and external key (A)	Medium (2)	Painted (P)	Round 45 mm	-
<b>A2PI</b>	Internal and external key (A)	Medium (2)	Painted (P)	Round 45 mm	Same key (I)
<b>A2P5</b>	Internal and external key (A)	Medium (2)	Painted (P)	Round 50 mm (5)	-
<b>A2P5I</b>	Internal and external key (A)	Medium (2)	Painted (P)	Round 50 mm (5)	Same key (I)
<b>A2P7</b>	Internal and external key (A)	Medium (2)	Painted (P)	Round 70 mm (7)	-
<b>A2P7I</b>	Internal and external key (A)	Medium (2)	Painted (P)	Round 70 mm (7)	Same key (I)
<b>A2P9</b>	Internal and external key (A)	Medium (2)	Painted (P)	Round 90 mm (9)	-
<b>A2P9I</b>	Internal and external key (A)	Medium (2)	Painted (P)	Round 90 mm (9)	Same key (I)

★ **Rustproof:** These models of locks can be manufactured with special anti-rust square bar **(AN)**

### Limitings



Compatibility with commercially available locks

### Packaging

Complete boxes are always supplied. According to cylinder size



**Cylinder 45 / 50**  
12 and 25 units



**Cylinder 70**  
10 and 20 units with cylinder of 70 mm



**Cylinder 90**  
6 units with cylinder of 90 mm

### Box contents

- lock
- 1 latch
- 8 screws
- 1 trim
- 3 trim screws
- 3 brass keys



\*All locks can be supplied with the same key and in different models.

\*All locks can be supplied with different keys and a single master key.

\*These lock models can match the keys with our security padlocks, mortise locks 60 and 70 and our right and left gate locks.



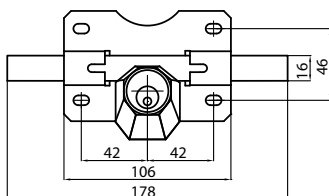
# A2PS

## LOCK PAINTED

INTERNAL KEY  
WITHOUT EXTERNAL CYLINDER

REF	Model	Size	Finishing	Cylinder	Type of key
<b>A2PS</b>	Internal key (A)	Medium (2)	Painted (P)	-	-
<b>A2PSI</b>	Internal key (A)	Medium (2)	Painted (P)	-	Same key (I)
★ <b>Rustproof:</b> These models of locks can be manufactured with special anti-rust square bar <b>(AN)</b>					

### Limitings



Compatibility with commercially available locks

### Packaging

Complete boxes are always supplied. According to cylinder size



**Cylinder**  
12 and 25 units

### Box contents

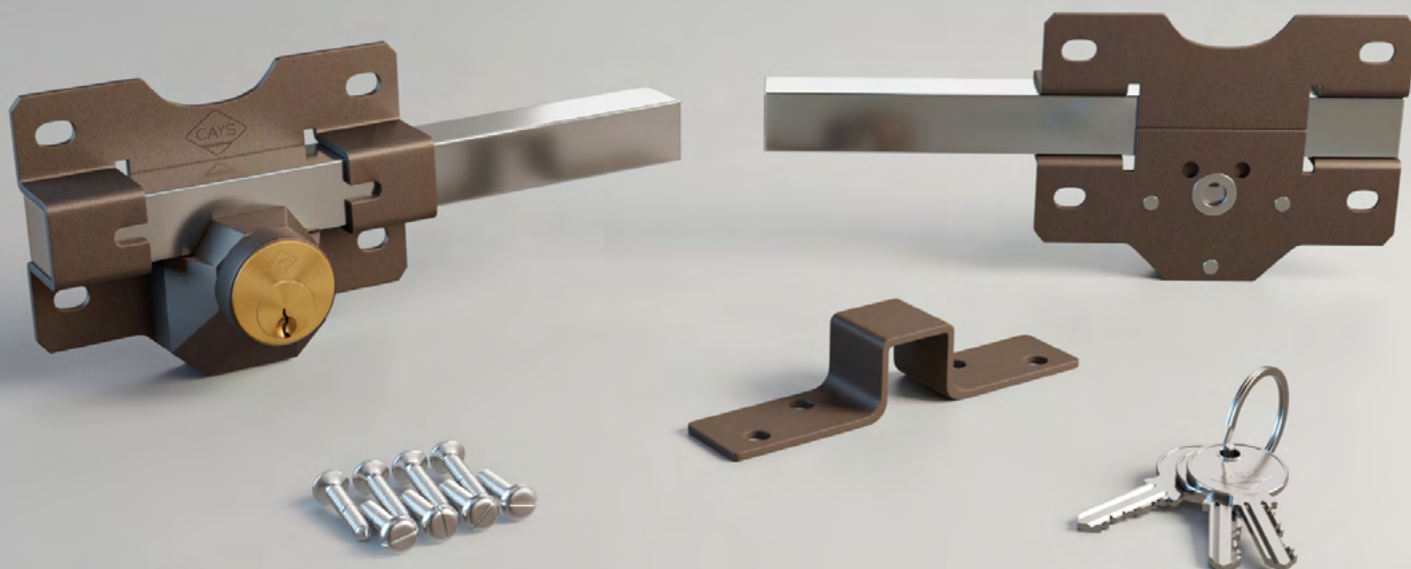
- 1 lock
- 1 latch
- 8 screws
- 3 brass keys



\*All locks can be supplied with the same key and in different models.

\*All locks can be supplied with different keys and a single master key.

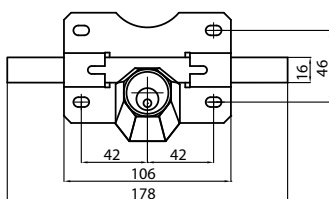
\*These lock models can match the keys with our security padlocks, mortise locks 60 and 70 and our right and left gate locks.



REF	Model	Size	Finishing	Cylinder	Type of key
<b>A2N</b>	Internal and external key (A)	Medium (2)	Nickel-plated (N)	Round 45 mm	-
<b>A2NI</b>	Internal and external key (A)	Medium (2)	Nickel-plated (N)	Round 45 mm	Same key (I)
<b>A2N5</b>	Internal and external key (A)	Medium (2)	Nickel-plated (N)	Round 50 mm (5)	-
<b>A2N5I</b>	Internal and external key (A)	Medium (2)	Nickel-plated (N)	Round 50 mm (5)	Same key (I)
<b>A2N7</b>	Internal and external key (A)	Medium (2)	Nickel-plated (N)	Round 70 mm (7)	-
<b>A2N7I</b>	Internal and external key (A)	Medium (2)	Nickel-plated (N)	Round 70 mm (7)	Same key (I)
<b>A2N9</b>	Internal and external key (A)	Medium (2)	Nickel-plated (N)	Round 90 mm (9)	-
<b>A2N9I</b>	Internal and external key (A)	Medium (2)	Nickel-plated (N)	Round 90 mm (9)	Same key (I)

★ **Rustproof:** These models of locks can be manufactured with special anti-rust square bar **(AN)**

### Limitings



Compatibility with commercially available locks

### Packaging

Complete boxes are always supplied. According to cylinder size



**Cylinder 45 / 50**  
12 and 25 units



**Cylinder 70**  
10 and 20 units with cylinder of 70 mm



**Cylinder 90**  
6 units with cylinder of 90 mm

### Box contents

- 1 lock
- 1 latch
- 8 screws
- 1 trim
- 3 trim screws
- 3 brass keys



\*All locks can be supplied with the same key and in different models.

\*All locks can be supplied with different keys and a single master key.

\*These lock models can match the keys with our security padlocks, mortise locks 60 and 70 and our right and left gate locks.



# A2NS

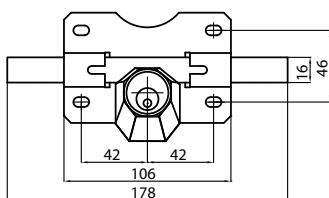
## LOCK NICKEL-PLATED

INTERNAL KEY WITHOUT EXTERNAL CYLINDER

REF	Model	Size	Finishing	Cylinder	Type of key
<b>A2NS</b>	Internal key (A)	Medium (2)	Nickel-plated (N)	-	-
<b>A2NSI</b>	Internal key (A)	Medium (2)	Nickel-plated (N)	-	Same key (I)

★ **Rustproof:** These models of locks can be manufactured with special anti-rust square bar **(AN)**

### Limitings



Compatibility with commercially available locks

### Packaging

Complete boxes are always supplied. According to cylinder size



**Cylinder**  
12 and 25 units

### Box contents

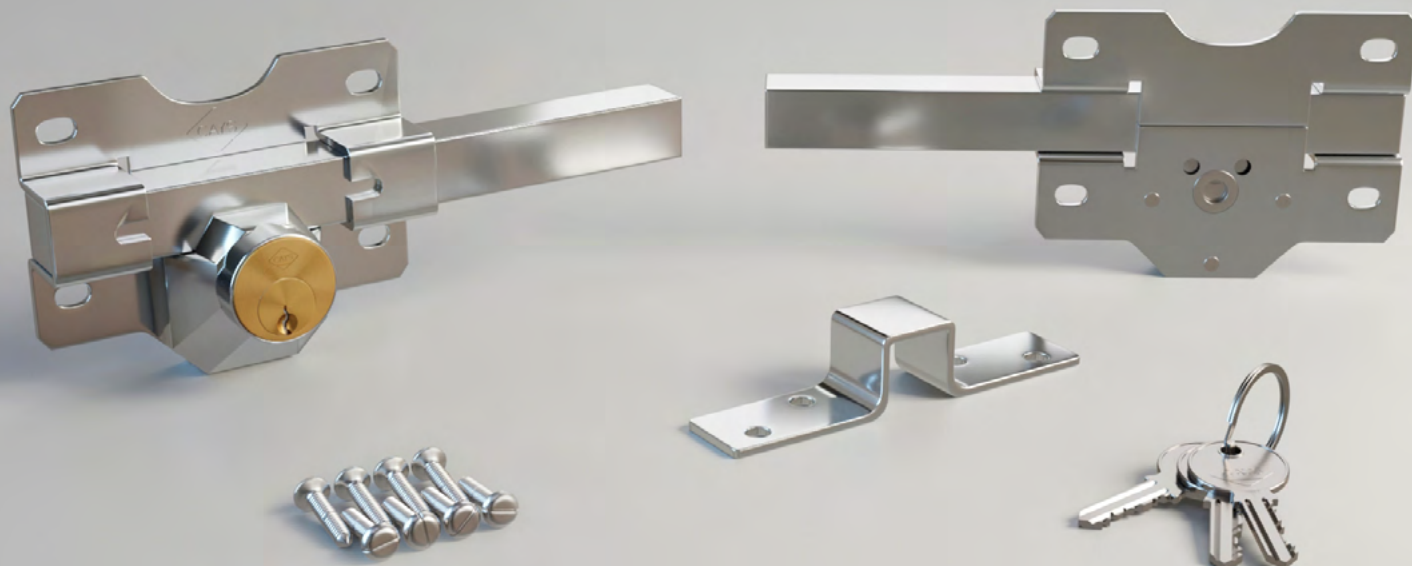
- 1 lock
- 1 latch
- 8 screws
- 3 brass keys



\*All locks can be supplied with the same key and in different models.

\*All locks can be supplied with different keys and a single master key.

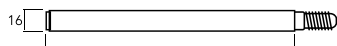
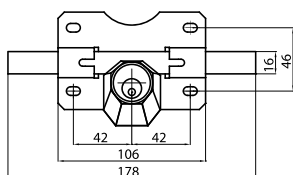
\*These lock models can match the keys with our security padlocks, mortise locks 60 and 70 and our right and left gate locks.



REF	Model	Size	Finishing	Cylinder	Type of key
<b>A2PPS</b>	Internal and external key (A)	Medium (2)	Painted (P)	Round 45 mm	-
<b>A2PPSI</b>	Internal and external key (A)	Medium (2)	Painted (P)	Round 45 mm	Same key (I)

★ **Rustproof:** These models of locks can be manufactured with special anti-rust square bar **(AN)**

### Limitings



Compatibility with commercially available locks

### Packaging

Complete boxes are always supplied. According to cylinder size



**Cylinder 45 / 50**  
12 and 25 units

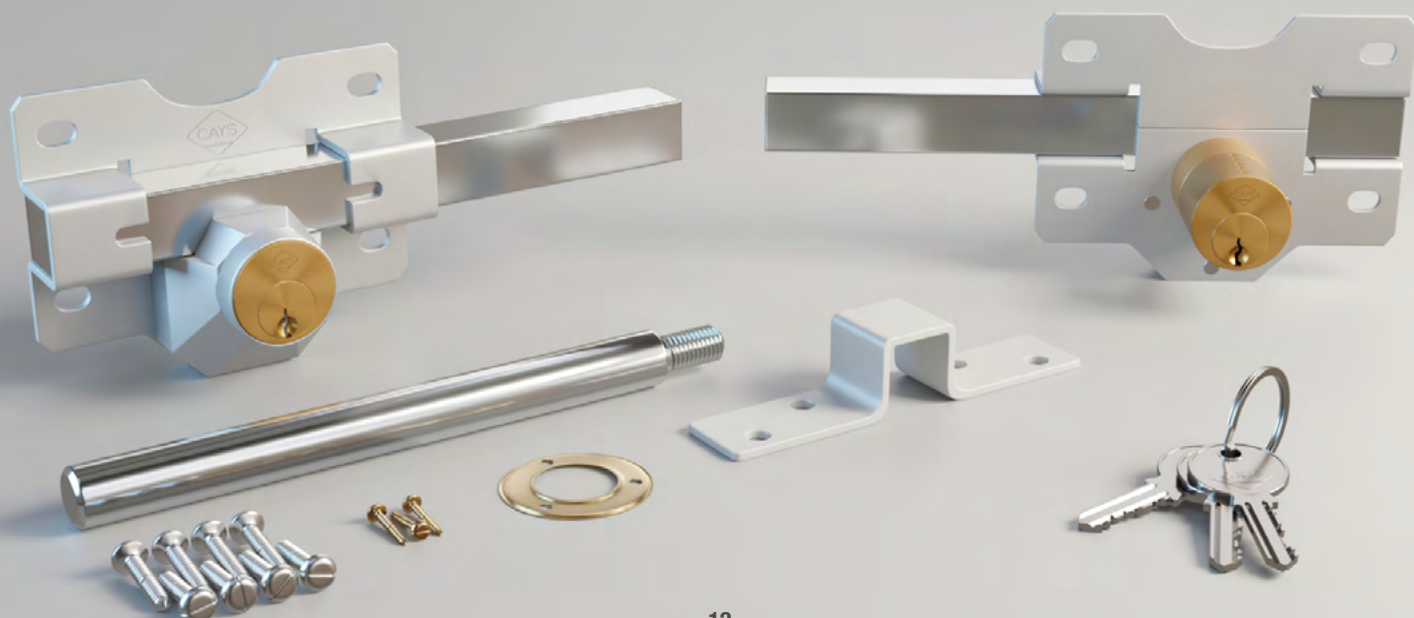
### Box contents

- 1 lock
- 1 latch
- 8 screws
- 1 trim
- 3 trim screws
- 3 brass keys

\*All locks can be supplied with the same key and in different models.

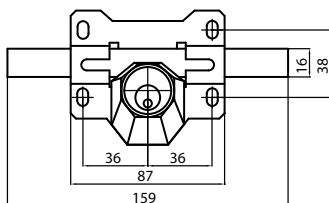
\*All locks can be supplied with different keys and a single master key.

\*These lock models can match the keys with our security padlocks, mortise locks 60 and 70 and our right and left gate locks.



REF	Model	Size	Finishing	Cylinder	Type of key
<b>A3P</b>	Internal and external key (A)	Small (3)	Painted (P)	Round 45 mm	-
<b>A3PI</b>	Internal and external key (A)	Small (3)	Painted (P)	Round 45 mm	Same key (I)
<b>A3P5</b>	Internal and external key (A)	Small (3)	Painted (P)	Round 50 mm (5)	-
<b>A3P5I</b>	Internal and external key (A)	Small (3)	Painted (P)	Round 50 mm (5)	Same key (I)
<b>A3P7</b>	Internal and external key (A)	Small (3)	Painted (P)	Round 70 mm (7)	-
<b>A3P7I</b>	Internal and external key (A)	Small (3)	Painted (P)	Round 70 mm (7)	Same key (I)
<b>A3P9</b>	Internal and external key (A)	Small (3)	Painted (P)	Round 90 mm (9)	-
<b>A3P9I</b>	Internal and external key (A)	Small (3)	Painted (P)	Round 90 mm (9)	Same key (I)

### Limitings



Compatibility with commercially available locks

### Packaging

Complete boxes are always supplied. According to cylinder size



#### Cylinder 45 / 50

12 and 25 units



#### Cylinder 70

10 and 20 units with cylinder of 70 mm



#### Cylinder 90

6 units with cylinder of 90 mm

### Box contents

- 1 lock
- 1 latch
- 8 screws
- 1 trim
- 3 trim screws
- 3 brass keys

\*All locks can be supplied with the same key and in different models.

\*All locks can be supplied with different keys and a single master key.

\*These lock models can match the keys with our security padlocks, mortise locks 60 and 70 and our right and left gate locks.



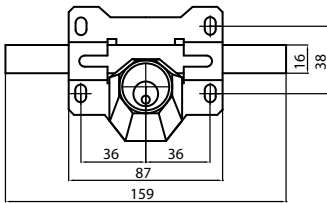
# A3PS

## LOCK PAINTED

INTERNAL KEY WITHOUT EXTERNAL CYLINDER

REF	Model	Size	Finishing	Cylinder	Type of key
<b>A3PS</b>	Internal key (A)	Small (3)	Painted (P)	-	-
<b>A3PSI</b>	Internal key (A)	Small (3)	Painted (P)	-	Same key (I)

### Limitings



Compatibility with commercially available locks

### Packaging

Complete boxes are always supplied. According to cylinder size



**Cylinder**  
12 and 25 units

### Box contents

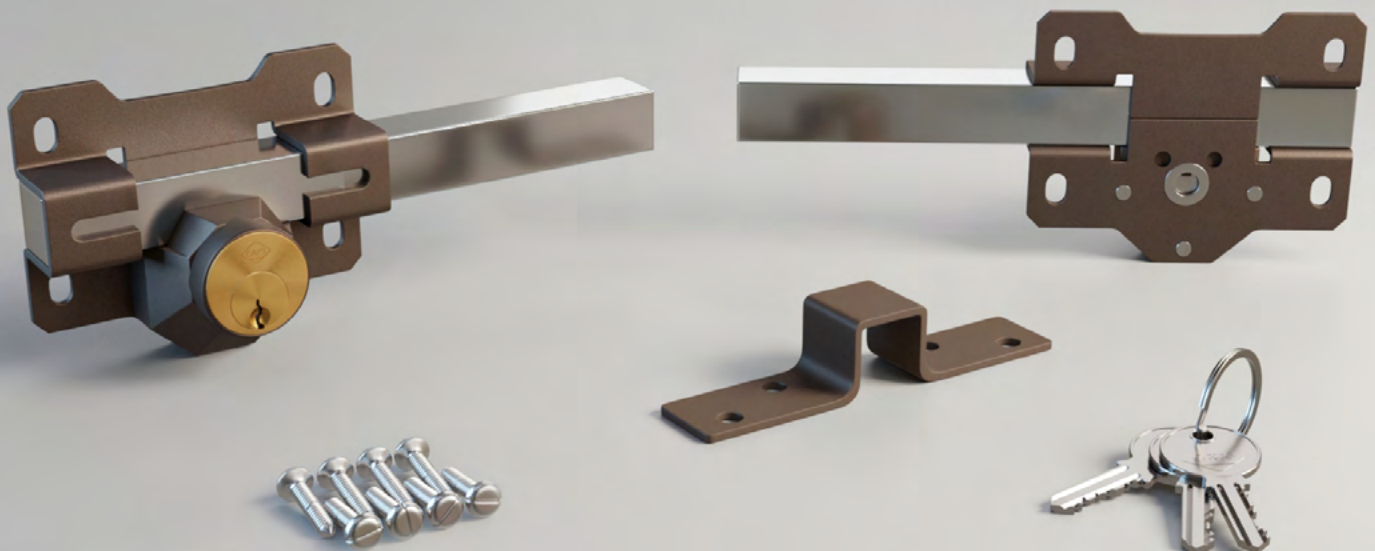
- 1 lock
- 1 latch
- 8 screws
- 3 brass keys



\*All locks can be supplied with the same key and in different models.

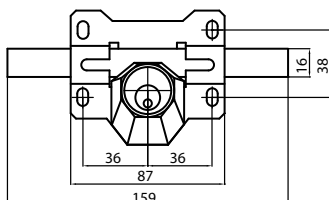
\*All locks can be supplied with different keys and a single master key.

\*These lock models can match the keys with our security padlocks, mortise locks 60 and 70 and our right and left gate locks.



REF	Model	Size	Finishing	Cylinder	Type of key
<b>A3N</b>	Internal and external key (A)	Small (3)	Nickel-plated (N)	Round 45 mm	-
<b>A3NI</b>	Internal and external key (A)	Small (3)	Nickel-plated (N)	Round 45 mm	Same key (I)
<b>A3N5</b>	Internal and external key (A)	Small (3)	Nickel-plated (N)	Round 50 mm (5)	-
<b>A3N5I</b>	Internal and external key (A)	Small (3)	Nickel-plated (N)	Round 50 mm (5)	Same key (I)
<b>A3N7</b>	Internal and external key (A)	Small (3)	Nickel-plated (N)	Round 70 mm (7)	-
<b>A3N7I</b>	Internal and external key (A)	Small (3)	Nickel-plated (N)	Round 70 mm (7)	Same key (I)
<b>A3N9</b>	Internal and external key (A)	Small (3)	Nickel-plated (N)	Round 90 mm (9)	-
<b>A3N9I</b>	Internal and external key (A)	Small (3)	Nickel-plated (N)	Round 90 mm (9)	Same key (I)

### Limitings



Compatibility with commercially available locks

### Packaging

Complete boxes are always supplied. According to cylinder size



#### Cylinder 45 / 50

12 and 25 units



#### Cylinder 70

10 and 20 units with cylinder of 70 mm



#### Cylinder 90

6 units with cylinder of 90 mm

### Box contents

- 1 lock
- 1 latch
- 8 screws
- 1 trim
- 3 trim screws
- 3 brass keys

\*All locks can be supplied with the same key and in different models.

\*All locks can be supplied with different keys and a single master key.

\*These lock models can match the keys with our security padlocks, mortise locks 60 and 70 and our right and left gate locks.



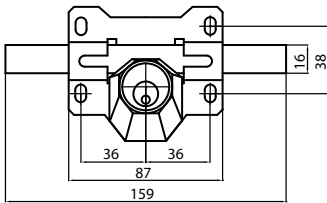
# A3NS

## LOCK NICKEL-PLATED

INTERNAL KEY WITHOUT EXTERNAL CYLINDER

REF	Model	Size	Finishing	Cylinder	Type of key
<b>A3NS</b>	Internal key (A)	Small (3)	Nickel-plated (N)	-	-
<b>A3NSI</b>	Internal key (A)	Small (3)	Nickel-plated (N)	-	Same key (I)

### Limitings



Compatibility with commercially available locks

### Packaging

Complete boxes are always supplied. According to cylinder size



**Cylinder**  
12 and 25 units

### Box contents

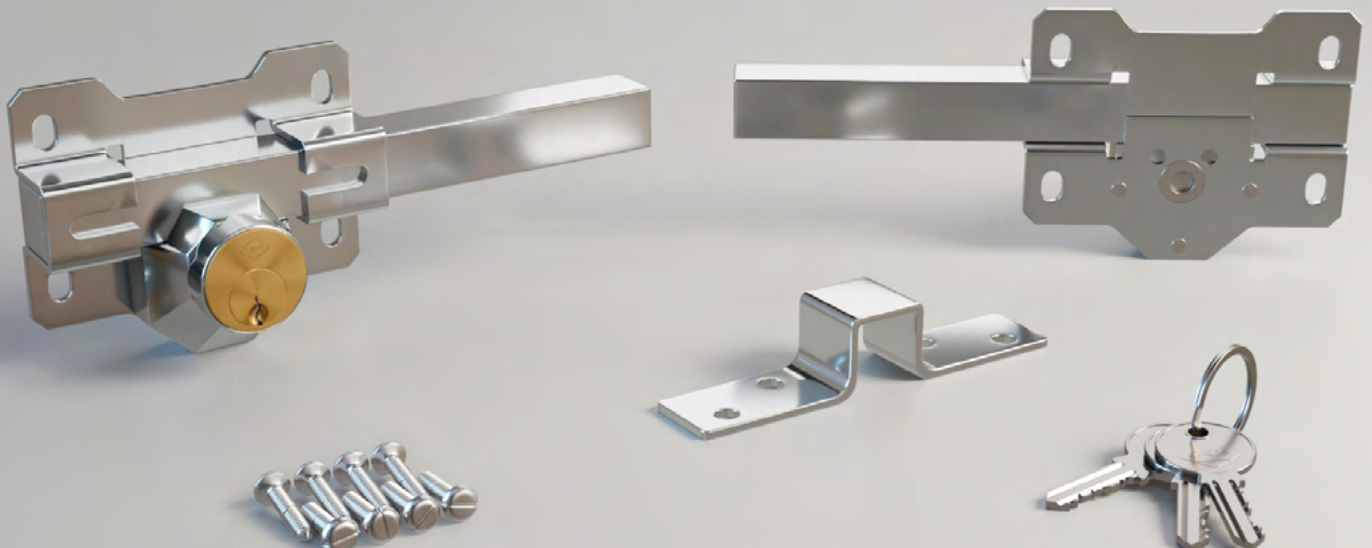
- 1 lock
- 1 latch
- 8 screws
- 3 brass keys



\*All locks can be supplied with the same key and in different models.

\*All locks can be supplied with different keys and a single master key.

\*These lock models can match the keys with our security padlocks, mortise locks 60 and 70 and our right and left gate locks.



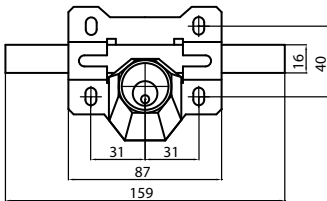
# A4P

## LOCK PAINTED

### INTERNAL AND EXTERNAL KEY PEAR CYLINDER

REF	Model	Size	Finishing	Cylinder	Type of key
<b>A4P</b>	Internal and external key (A)	Small (3)	Painted (P)	Pear 45 mm	-
<b>A4PI</b>	Internal and external key (A)	Small (3)	Painted (P)	Pear 45 mm	Same key (I)
<b>A4P7</b>	Internal and external key (A)	Small (3)	Painted (P)	Pear 70 mm (7)	-
<b>A4P7I</b>	Internal and external key (A)	Small (3)	Painted (P)	Pear 70 mm (7)	Same key (I)

#### Limitings



Compatibility with commercially available locks

#### Packaging

Complete boxes are always supplied. According to cylinder size



**Cylinder 45 / 50**  
12 and 25 units



**Cylinder 70**  
10 and 20 units with cylinder of 70 mm

#### Box contents

- 1 lock
- 1 latch
- 8 screws
- 1 trim
- 3 trim screws
- 3 brass keys



\*All locks can be supplied with the same key and in different models.

\*All locks can be supplied with different keys and a single master key.

\*These lock models can match the keys with our security padlocks, mortise locks 60 and 70 and our right and left gate locks.



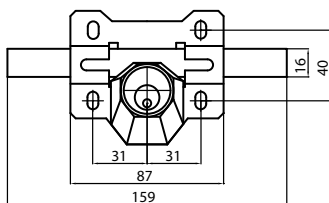
# A4N

## LOCK NICKEL-PLATED

INTERNAL AND EXTERNAL KEY PEAR CYLINDER

REF	Model	Size	Finishing	Cylinder	Type of key
<b>A4N</b>	Internal and external key (A)	Small (3)	Nickel-plated (N)	Pear 45 mm	-
<b>A4NI</b>	Internal and external key (A)	Small (3)	Nickel-plated (N)	Pear 45 mm	Same key (I)
<b>A4N7</b>	Internal and external key (A)	Small (3)	Nickel-plated (N)	Pear 70 mm (7)	-
<b>A4N7I</b>	Internal and external key (A)	Small (3)	Nickel-plated (N)	Pear 70 mm (7)	Same key (I)

### Limitings



Compatibility with commercially available locks

### Packaging

Complete boxes are always supplied. According to cylinder size



#### Cylinder 45 / 50

12 and 25 units



#### Cylinder 70

10 and 20 units with cylinder of 70 mm

### Box contents

- 1 lock
- 1 latch
- 8 screws
- 1 trim
- 3 trim screws
- 3 brass keys



\*All locks can be supplied with the same key and in different models.

\*All locks can be supplied with different keys and a single master key.

\*These lock models can match the keys with our security padlocks, mortise locks 60 and 70 and our right and left gate locks.





LOCKS SERRATED KEY

**MODEL**

**B**

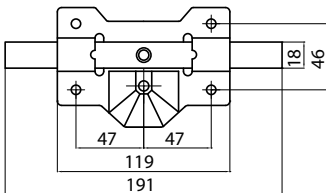
# B1P

## LOCK PAINTED

### EXTERNAL KEY AND INTERNAL BUTTON

REF	Model	Size	Finishing	Cylinder	Type of key
<b>B1P</b>	External key and internal button (B)	Large (1)	Painted (P)	Round 45 mm	-
<b>B1PI</b>	External key and internal button (B)	Large (1)	Painted (P)	Round 45 mm	Same key (I)
<b>B1P5</b>	External key and internal button (B)	Large (1)	Painted (P)	Round 50 mm (5)	-
<b>B1P5I</b>	External key and internal button (B)	Large (1)	Painted (P)	Round 50 mm (5)	Same key (I)
<b>B1P7</b>	External key and internal button (B)	Large (1)	Painted (P)	Round 70 mm (7)	-
<b>B1P7I</b>	External key and internal button (B)	Large (1)	Painted (P)	Round 70 mm (7)	Same key (I)
<b>B1P9</b>	External key and internal button (B)	Large (1)	Painted (P)	Round 90 mm (9)	-
<b>B1P9I</b>	External key and internal button (B)	Large (1)	Painted (P)	Round 90 mm (9)	Same key (I)

#### Limitings



Compatibility with commercially available locks

#### Packaging

Complete boxes are always supplied. According to cylinder size



**Cylinder 45 / 50**  
10 and 20 units



**Cylinder 70**  
10 and 20 units with cylinder of 70 mm



**Cylinder 90**  
6 units with cylinder of 90 mm

#### Box contents

- 1 lock
- 1 latch
- 8 screws
- 1 trim
- 3 trim screws
- 3 brass keys



\*All locks can be supplied with the same key and in different models.

\*All locks can be supplied with different keys and a single master key.

\*These lock models can match the keys with our security padlocks, mortise locks 60 and 70 and our right and left gate locks.



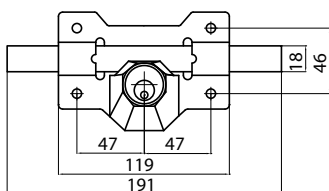
# B1N

## LOCK NICKEL-PLATED

### EXTERNAL KEY AND INTERNAL BUTTON

REF	Model	Size	Finishing	Cylinder	Type of key
<b>B1N</b>	External key and internal button (B)	Large (1)	Nickel-plated (N)	Round 45 mm	-
<b>B1NI</b>	External key and internal button (B)	Large (1)	Nickel-plated (N)	Round 45 mm	Same key (I)
<b>B1N5</b>	External key and internal button (B)	Large (1)	Nickel-plated (N)	Round 50 mm (5)	-
<b>B1N5I</b>	External key and internal button (B)	Large (1)	Nickel-plated (N)	Round 50 mm (5)	Same key (I)
<b>B1N7</b>	External key and internal button (B)	Large (1)	Nickel-plated (N)	Round 70 mm (7)	-
<b>B1N7I</b>	External key and internal button (B)	Large (1)	Nickel-plated (N)	Round 70 mm (7)	Same key (I)
<b>B1N9</b>	External key and internal button (B)	Large (1)	Nickel-plated (N)	Round 90 mm (9)	-
<b>B1N9I</b>	External key and internal button (B)	Large (1)	Nickel-plated (N)	Round 90 mm (9)	Same key (I)

#### Limitings



Compatibility with commercially available locks

#### Packaging

Complete boxes are always supplied. According to cylinder size



##### Cylinder 45 / 50

10 and 20 units



##### Cylinder 70

10 and 20 units with cylinder of 70 mm



##### Cylinder 90

6 units with cylinder of 90 mm

#### Box contents

- 1 lock
- 1 latch
- 8 screws
- 1 trim
- 3 trim screws
- 3 brass keys



\*All locks can be supplied with the same key and in different models.

\*All locks can be supplied with different keys and a single master key.

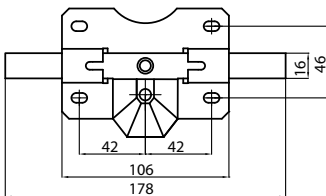
\*These lock models can match the keys with our security padlocks, mortise locks 60 and 70 and our right and left gate locks.



REF	Model	Size	Finishing	Cylinder	Type of key
<b>B2P</b>	External key and internal button (B)	Medium (2)	Painted (P)	Round 45 mm	-
<b>B2PI</b>	External key and internal button (B)	Medium (2)	Painted (P)	Round 45 mm	Same key (I)
<b>B2P5</b>	External key and internal button (B)	Medium (2)	Painted (P)	Round 50 mm (5)	-
<b>B2P5I</b>	External key and internal button (B)	Medium (2)	Painted (P)	Round 50 mm (5)	Same key (I)
<b>B2P7</b>	External key and internal button (B)	Medium (2)	Painted (P)	Round 70 mm (7)	-
<b>B2P7I</b>	External key and internal button (B)	Medium (2)	Painted (P)	Round 70 mm (7)	Same key (I)
<b>B2P9</b>	External key and internal button (B)	Medium (2)	Painted (P)	Round 90 mm (9)	-
<b>B2P9I</b>	External key and internal button (B)	Medium (2)	Painted (P)	Round 90 mm (9)	Same key (I)

★ **Rustproof:** These models of locks can be manufactured with special anti-rust square bar **(AN)**

### Limitings



Compatibility with commercially available locks

### Packaging

Complete boxes are always supplied. According to cylinder size



#### Cylinder 45 / 50

12 and 25 units



#### Cylinder 70

10 and 20 units with cylinder of 70 mm



#### Cylinder 90

6 units with cylinder of 90 mm

### Box contents

- 1 lock
- 1 latch
- 8 screws
- 1 trim
- 3 trim screws
- 3 brass keys



\*All locks can be supplied with the same key and in different models.

\*All locks can be supplied with different keys and a single master key.

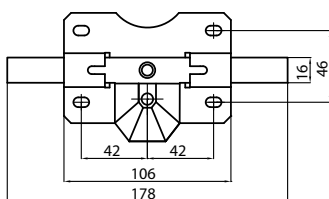
\*These lock models can match the keys with our security padlocks, mortise locks 60 and 70 and our right and left gate locks.



REF	Model	Size	Finishing	Cylinder	Type of key
<b>B2N</b>	External key and internal button (B)	Medium (2)	Nickel-plated (N)	Round 45 mm	-
<b>B2NI</b>	External key and internal button (B)	Medium (2)	Nickel-plated (N)	Round 45 mm	Same key (I)
<b>B2N5</b>	External key and internal button (B)	Medium (2)	Nickel-plated (N)	Round 50 mm (5)	-
<b>B2N5I</b>	External key and internal button (B)	Medium (2)	Nickel-plated (N)	Round 50 mm (5)	Same key (I)
<b>B2N7</b>	External key and internal button (B)	Medium (2)	Nickel-plated (N)	Round 70 mm (7)	-
<b>B2N7I</b>	External key and internal button (B)	Medium (2)	Nickel-plated (N)	Round 70 mm (7)	Same key (I)
<b>B2N9</b>	External key and internal button (B)	Medium (2)	Nickel-plated (N)	Round 90 mm (9)	-
<b>B2N9I</b>	External key and internal button (B)	Medium (2)	Nickel-plated (N)	Round 90 mm (9)	Same key (I)

★ **Rustproof:** These models of locks can be manufactured with special anti-rust square bar **(AN)**

### Limitings



Compatibility with commercially available locks

### Packaging

Complete boxes are always supplied. According to cylinder size



#### Cylinder 45 / 50

12 and 25 units



#### Cylinder 70

10 and 20 units with cylinder of 70 mm



#### Cylinder 90

6 units with cylinder of 90 mm

### Box contents

- 1 lock
- 1 latch
- 8 screws
- 1 trim
- 3 trim screws
- 3 brass keys



\*All locks can be supplied with the same key and in different models.

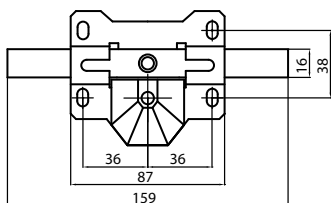
\*All locks can be supplied with different keys and a single master key.

\*These lock models can match the keys with our security padlocks, mortise locks 60 and 70 and our right and left gate locks.



REF	Model	Size	Finishing	Cylinder	Type of key
<b>B3P</b>	External key and internal button (B)	Small (3)	Painted (P)	Round 45 mm	-
<b>B3PI</b>	External key and internal button (B)	Small (3)	Painted (P)	Round 45 mm	Same key (I)
<b>B3P5</b>	External key and internal button (B)	Small (3)	Painted (P)	Round 50 mm (5)	-
<b>B3P5I</b>	External key and internal button (B)	Small (3)	Painted (P)	Round 50 mm (5)	Same key (I)
<b>B3P7</b>	External key and internal button (B)	Small (3)	Painted (P)	Round 70 mm (7)	-
<b>B3P7I</b>	External key and internal button (B)	Small (3)	Painted (P)	Round 70 mm (7)	Same key (I)
<b>B3P9</b>	External key and internal button (B)	Small (3)	Painted (P)	Round 90 mm (9)	-
<b>B3P9I</b>	External key and internal button (B)	Small (3)	Painted (P)	Round 90 mm (9)	Same key (I)

### Limitings



Compatibility with commercially available locks

### Packaging

Complete boxes are always supplied. According to cylinder size



**Cylinder 45 / 50**  
12 and 25 units



**Cylinder 70**  
10 and 20 units with cylinder of 70 mm



**Cylinder 90**  
6 units with cylinder of 90 mm

### Box contents

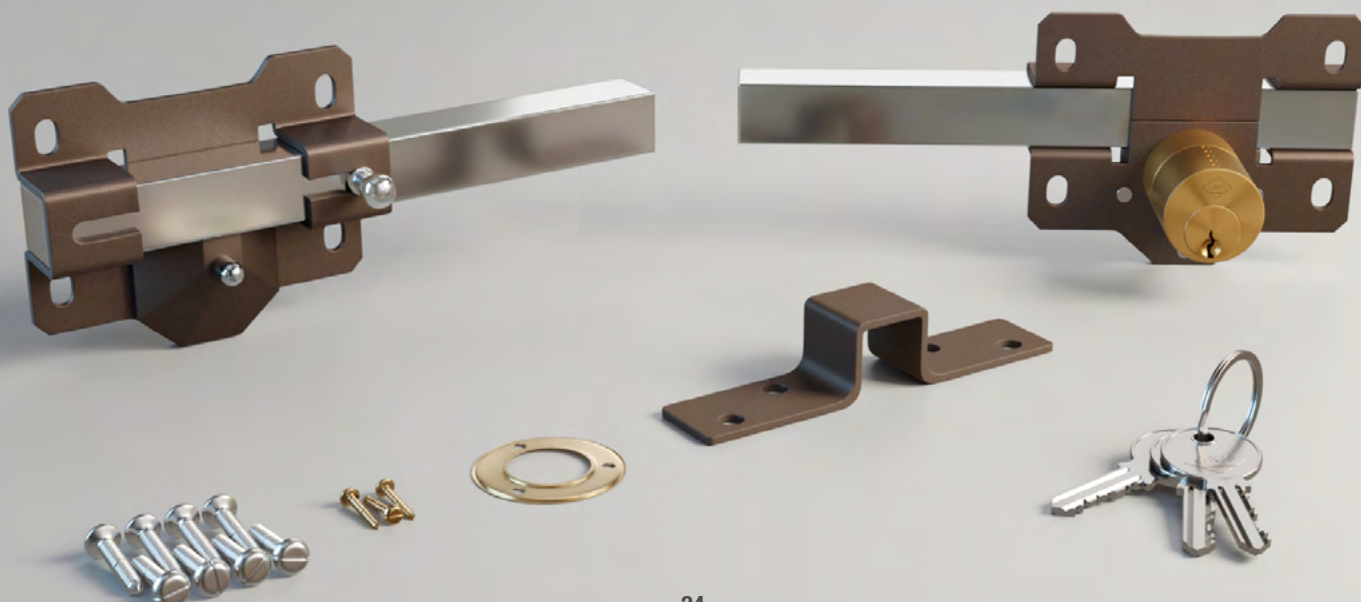
- 1 lock
- 1 latch
- 8 screws
- 1 trim
- 3 trim screws
- 3 brass keys



\*All locks can be supplied with the same key and in different models.

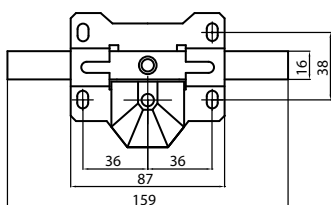
\*All locks can be supplied with different keys and a single master key.

\*These lock models can match the keys with our security padlocks, mortise locks 60 and 70 and our right and left gate locks.



REF	Model	Size	Finishing	Cylinder	Type of key
<b>B3N</b>	External key and internal button (B)	Small (3)	Nickel-plated (N)	Round 45 mm	-
<b>B3NI</b>	External key and internal button (B)	Small (3)	Nickel-plated (N)	Round 45 mm	Same key (I)
<b>B3N5</b>	External key and internal button (B)	Small (3)	Nickel-plated (N)	Round 50 mm (5)	-
<b>B3N5I</b>	External key and internal button (B)	Small (3)	Nickel-plated (N)	Round 50 mm (5)	Same key (I)
<b>B3N7</b>	External key and internal button (B)	Small (3)	Nickel-plated (N)	Round 70 mm (7)	-
<b>B3N7I</b>	External key and internal button (B)	Small (3)	Nickel-plated (N)	Round 70 mm (7)	Same key (I)
<b>B3N9</b>	External key and internal button (B)	Small (3)	Nickel-plated (N)	Round 90 mm (9)	-
<b>B3N9I</b>	External key and internal button (B)	Small (3)	Nickel-plated (N)	Round 90 mm (9)	Same key (I)

### Limitings



Compatibility with commercially available locks

### Packaging

Complete boxes are always supplied. According to cylinder size



**Cylinder 45 / 50**  
12 and 25 units



**Cylinder 70**  
10 and 20 units with cylinder of 70 mm



**Cylinder 90**  
6 units with cylinder of 90 mm

### Box contents

- 1 lock
- 1 latch
- 8 screws
- 1 trim
- 3 trim screws
- 3 brass keys



\*All locks can be supplied with the same key and in different models.

\*All locks can be supplied with different keys and a single master key.

\*These lock models can match the keys with our security padlocks, mortise locks 60 and 70 and our right and left gate locks.



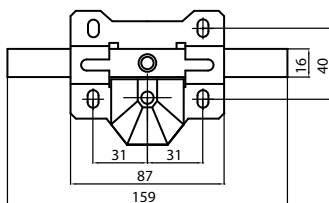
# B4P

## LOCK PAINTED

### EXTERNAL KEY PEAR CYLINDER AND INTERNAL BUTTON

REF	Model	Size	Finishing	Cylinder	Type of key
<b>B4P</b>	External key and internal button (B)	Small (3)	Painted (P)	Pear 45 mm	-
<b>B4PI</b>	External key and internal button (B)	Small (3)	Painted (P)	Pear 45 mm	Same key (I)
<b>B4P7</b>	External key and internal button (B)	Small (3)	Painted (P)	Pear 70 mm (7)	-
<b>B4P7I</b>	External key and internal button (B)	Small (3)	Painted (P)	Perao 70 mm (7)	Same key (I)

#### Limitings



Compatibility with commercially available locks

#### Packaging

Complete boxes are always supplied. According to cylinder size



##### Cylinder 45 / 50

12 and 25 units



##### Cylinder 70

10 and 20 units with cylinder of 70 mm

#### Box contents

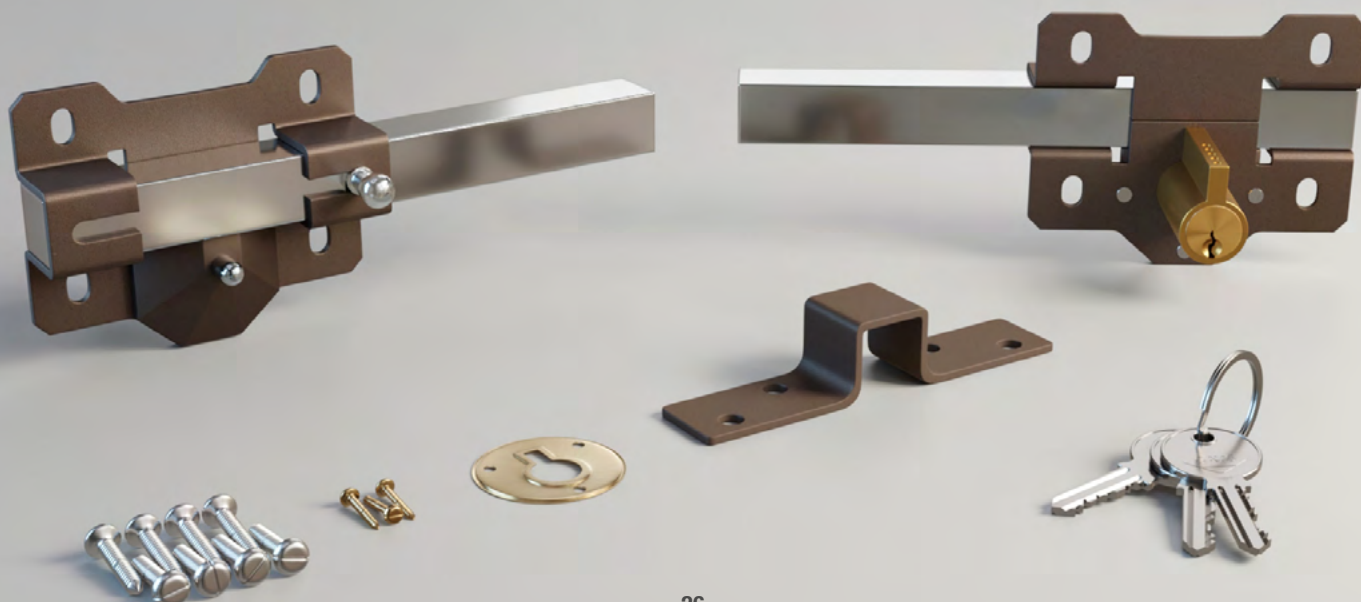
- 1 lock
- 1 latch
- 8 screws
- 1 trim
- 3 trim screws
- 3 brass keys



\*All locks can be supplied with the same key and in different models.

\*All locks can be supplied with different keys and a single master key.

\*These lock models can match the keys with our security padlocks, mortise locks 60 and 70 and our right and left gate locks.



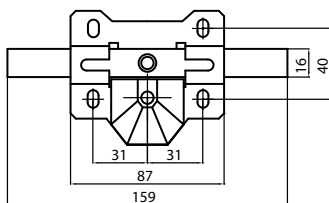
# B4N

## LOCK NICKEL-PLATED

### EXTERNAL KEY PEAR CYLINDER AND INTERNAL BUTTON

REF	Model	Size	Finishing	Cylinder	Type of key
<b>B4N</b>	External key and internal button (B)	Small (3)	Nickel-plated (N)	Pear 45 mm	-
<b>B4NI</b>	External key and internal button (B)	Small (3)	Nickel-plated (N)	Pear 45 mm	Same key (I)
<b>B4N7</b>	External key and internal button (B)	Small (3)	Nickel-plated (N)	Pear 70 mm (7)	-
<b>B4N7I</b>	External key and internal button (B)	Small (3)	Nickel-plated (N)	Pear 70 mm (7)	Same key (I)

#### Limitings



Compatibility with commercially available locks

#### Packaging

Complete boxes are always supplied. According to cylinder size



##### Cylinder 45 / 50

12 and 25 units



##### Cylinder 70

10 and 20 units with cylinder of 70 mm

#### Box contents

- 1 lock
- 1 latch
- 8 screws
- 1 trim
- 3 trim screws
- 3 brass keys



\*All locks can be supplied with the same key and in different models.

\*All locks can be supplied with different keys and a single master key.

\*These lock models can match the keys with our security padlocks, mortise locks 60 and 70 and our right and left gate locks.





# LOCKS

POINT KEY





LOCKS POINT KEY

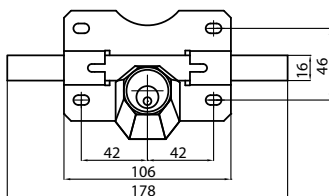
**MODEL**

**A**

REF	Model	Size	Finishing	Cylinder	Type of key
<b>A2PU</b>	Internal and external key (A)	Medium (2)	Painted (P)	Point key 45 mm (U)	-
<b>A2PUI</b>	Internal and external key (A)	Medium (2)	Painted (P)	Point key 45 mm (U)	Same key (I)
<b>A2PU7</b>	Internal and external key (A)	Medium (2)	Painted (P)	Point key 70 mm (U)	-
<b>A2PU7I</b>	Internal and external key (A)	Medium (2)	Painted (P)	Point key 70 mm (U)	Same key (I)

★ **Rustproof:** These models of locks can be manufactured with special anti-rust square bar **(AN)**

### Limitings



Compatibility with commercially available locks

### Packaging

Complete boxes are always supplied. According to cylinder size



**Cylinder 45**  
12 and 25 units



**Cylinder 70**  
10 and 20 units with cylinder of 70 mm

### Box contents

- 1 lock
- 1 latch
- 8 screws
- 1 trim
- 3 trim screws
- 5 brass keys



\*All locks can be supplied with the same key and in different models.

\*All locks can be supplied with different keys and a single master key.

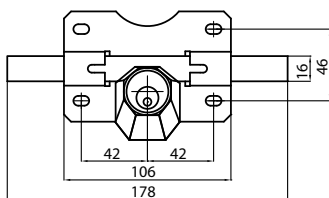
\*These lock models can match the keys with our security padlocks, mortise locks 60 and 70 and our right and left gate locks.



REF	Model	Size	Finishing	Cylinder	Type of key
<b>A2NU</b>	Internal and external key (A)	Medium (2)	Nickel-plated (N)	Point key 45 mm (U)	-
<b>A2NUI</b>	Internal and external key (A)	Medium (2)	Nickel-plated (N)	Point key 45 mm (U)	Same key (I)
<b>A2NU7</b>	Internal and external key (A)	Medium (2)	Nickel-plated (N)	Point key 70 mm (U)	-
<b>A2NU7I</b>	Internal and external key (A)	Medium (2)	Nickel-plated (N)	Point key 70 mm (U)	Same key (I)

★ **Rustproof:** These models of locks can be manufactured with special anti-rust square bar **(AN)**

### Limitings



Compatibility with commercially available locks

### Packaging

Complete boxes are always supplied. According to cylinder size



**Cylinder 45**  
12 and 25 units



**Cylinder 70**  
10 and 20 units with cylinder of 70 mm

### Box contents

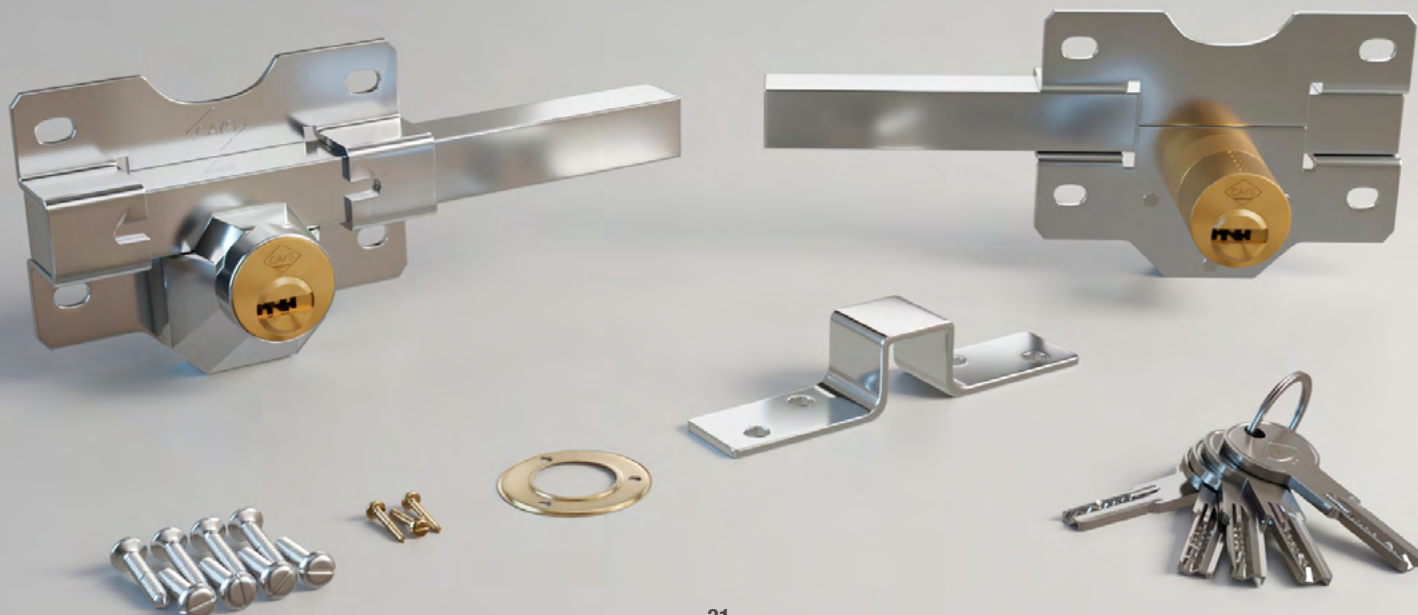
- 1 lock
- 1 latch
- 8 screws
- 1 trim
- 3 trim screws
- 5 brass keys



\*All locks can be supplied with the same key and in different models.

\*All locks can be supplied with different keys and a single master key.

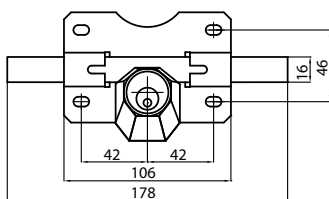
\*These lock models can match the keys with our security padlocks, mortise locks 60 and 70 and our right and left gate locks.



REF	Model	Size	Finishing	Cylinder	Type of key
<b>A2PSU</b>	Internal key (A)	Medium (2)	Painted (P)	-	-
<b>A2PSUI</b>	Internal key (A)	Medium (2)	Painted (P)	-	Same key (I)

★ **Rustproof:** These models of locks can be manufactured with special anti-rust square bar **(AN)**

### Limitings



Compatibility with commercially available locks

### Packaging

Complete boxes are always supplied. According to cylinder size



**Cylinder**  
12 and 25 units

### Box contents

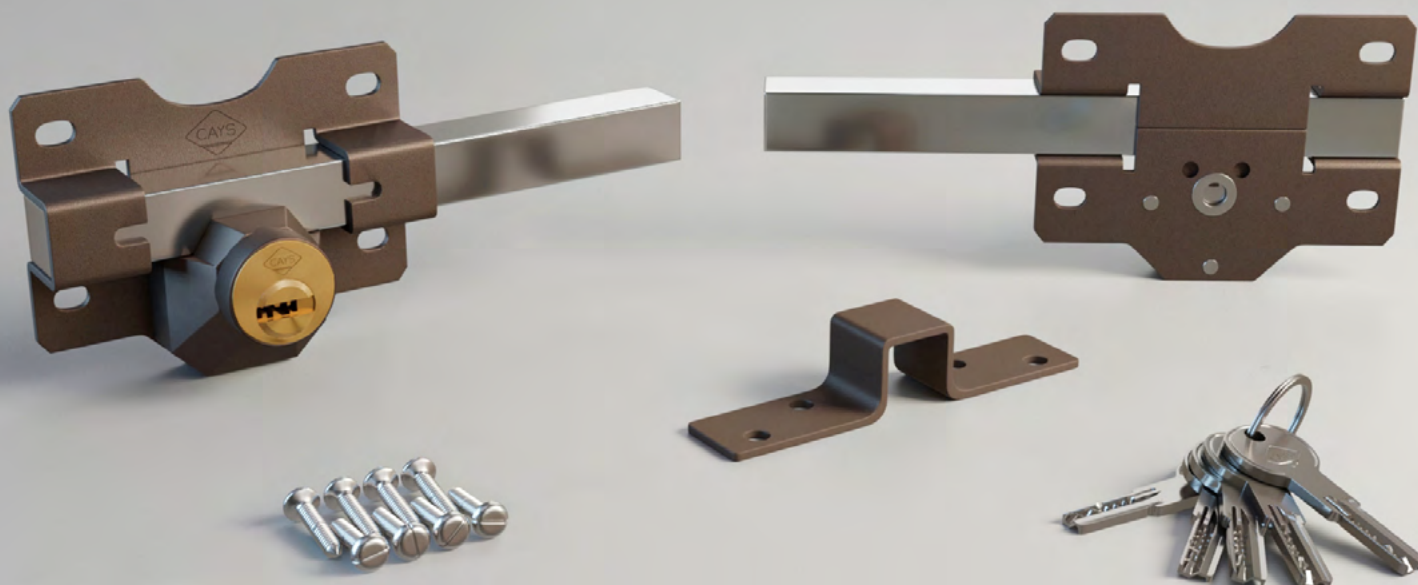
- 1 lock
- 1 latch
- 8 screws
- 5 brass keys



\*All locks can be supplied with the same key and in different models.

\*All locks can be supplied with different keys and a single master key.

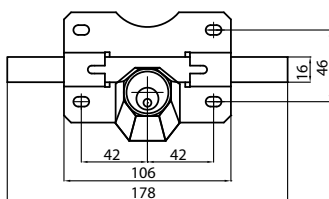
\*These lock models can match the keys with our security padlocks, mortise locks 60 and 70 and our right and left gate locks.



REF	Model	Size	Finishing	Cylinder	Type of key
<b>A2NSU</b>	Internal key (A)	Medium (2)	Nickel-plated (N)	-	-
<b>A2NSUI</b>	Internal key (A)	Medium (2)	Nickel-plated (N)	-	Same key (I)

★ **Rustproof:** These models of locks can be manufactured with special anti-rust square bar **(AN)**

### Limitings



Compatibility with commercially available locks

### Packaging

Complete boxes are always supplied. According to cylinder size



**Cylinder**  
12 and 25 units

### Box contents

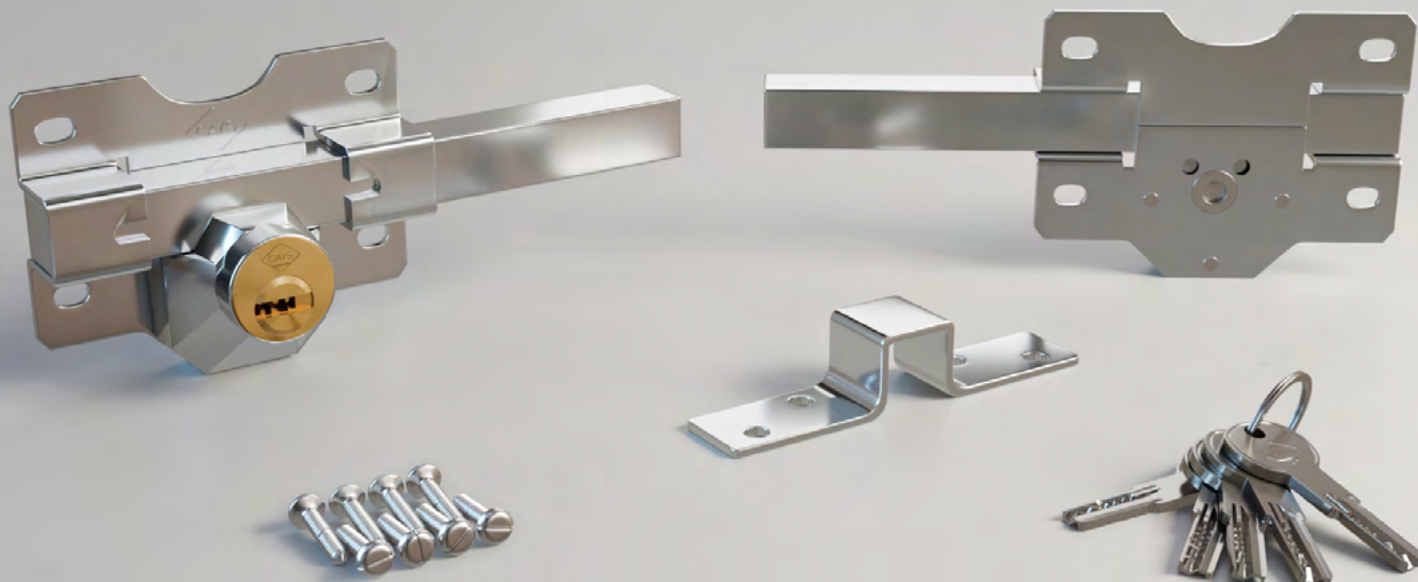
- 1 lock
- 1 latch
- 8 screws
- 5 brass keys



\*All locks can be supplied with the same key and in different models.

\*All locks can be supplied with different keys and a single master key.

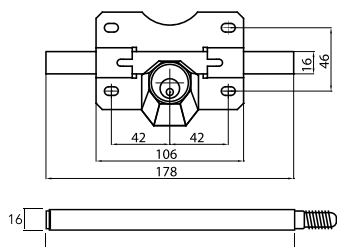
\*These lock models can match the keys with our security padlocks, mortise locks 60 and 70 and our right and left gate locks.



REF	Model	Size	Finishing	Cylinder	Type of key
<b>A2PPSU</b>	Internal and external key (A)	Medium (2)	Painted (P)	Point key 45 mm (U)	-
<b>A2PPSUI</b>	Internal and external key (A)	Medium (2)	Painted (P)	Point key 45 mm (U)	Same key (I)

★ **Rustproof:** These models of locks can be manufactured with special anti-rust square bar **(AN)**

#### Limitings



Compatibility with commercially available locks

#### Packaging

Complete boxes are always supplied. According to cylinder size



**Cylinder 45**  
12 and 25 units

#### Box contents

- 1 lock
- 1 latch
- 8 screws
- 1 trim
- 3 trim screws
- 5 brass keys



\*All locks can be supplied with the same key and in different models.

\*All locks can be supplied with different keys and a single master key.

\*These lock models can match the keys with our security padlocks, mortise locks 60 and 70 and our right and left gate locks.





LOCKS POINT KEY

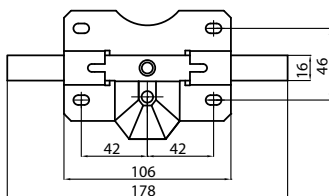
**MODEL**

**B**

REF	Model	Size	Finishing	Cylinder	Type of key
<b>B2PU</b>	External key and internal button (B)	Medium (2)	Painted (P)	Point key 45 mm (U)	-
<b>B2PUI</b>	External key and internal button (B)	Medium (2)	Painted (P)	Point key 45 mm (U)	Same key (I)
<b>B2PU7</b>	External key and internal button (B)	Medium (2)	Painted (P)	Point key 70 mm (U)	-
<b>B2PU7I</b>	External key and internal button (B)	Medium (2)	Painted (P)	Point key 70 mm (U)	Same key (I)

★ **Rustproof:** These models of locks can be manufactured with special anti-rust square bar **(AN)**

### Limitings



Compatibility with commercially available locks

### Packaging

Complete boxes are always supplied. According to cylinder size



**Cylinder 45**  
12 and 25 units



**Cylinder 70**  
10 and 20 units with cylinder of 70 mm

### Box contents

- 1 lock
- 1 latch
- 8 screws
- 1 trim
- 3 trim screws
- 5 brass keys



\*All locks can be supplied with the same key and in different models.

\*All locks can be supplied with different keys and a single master key.

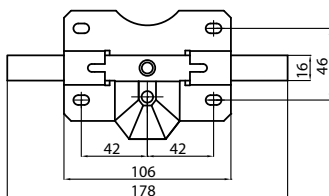
\*These lock models can match the keys with our security padlocks, mortise locks 60 and 70 and our right and left gate locks.



REF	Model	Size	Finishing	Cylinder	Type of key
<b>B2NU</b>	External key and internal button (B)	Medium (2)	Nickel-plated (N)	Point key 45 mm (U)	-
<b>B2NUI</b>	External key and internal button (B)	Medium (2)	Nickel-plated (N)	Point key 45 mm (U)	Same key (I)
<b>B2NU7</b>	External key and internal button (B)	Medium (2)	Nickel-plated (N)	Point key 70 mm (U)	-
<b>B2NU7I</b>	External key and internal button (B)	Medium (2)	Nickel-plated (N)	Point key 70 mm (U)	Same key (I)

★ **Rustproof:** These models of locks can be manufactured with special anti-rust square bar **(AN)**

### Limitings



Compatibility with commercially available locks

### Packaging

Complete boxes are always supplied. According to cylinder size



**Cylinder 45**  
12 and 25 units



**Cylinder 70**  
10 and 20 units with cylinder of 70 mm

### Box contents

- 1 lock
- 1 latch
- 8 screws
- 1 trim
- 3 trim screws
- 5 brass ke



\*All locks can be supplied with the same key and in different models.

\*All locks can be supplied with different keys and a single master key.

\*These lock models can match the keys with our security padlocks, mortise locks 60 and 70 and our right and left gate locks.





# PRODUCTS

## MODEL C



**C130**  
**C140**  
**C150**

# SECURITY PADLOCKS

SERRATED KEY

REF	Model	Finishing	Type of key
<b>C130</b>	30	Zinc-plated and lacquered	-
<b>C130I</b>	30	Zinc-plated and lacquered	Same key (I)

REF	Model	Finishing	Type of key
<b>C150</b>	50	Zinc-plated and lacquered	-
<b>C150I</b>	50	Zinc-plated and lacquered	Same key (I)

REF	Model	Finishing	Type of key
<b>C140</b>	40	Zinc-plated and lacquered	-
<b>C140I</b>	40	Zinc-plated and lacquered	Same key (I)

## Packaging

Complete boxes are always supplied. According to cylinder size



**Model C1-30 mm**  
6 units



**Model C1-40 mm**  
3 sets of 2 units



**Model C1-50 mm**  
3 sets of 2 units

## Box contents

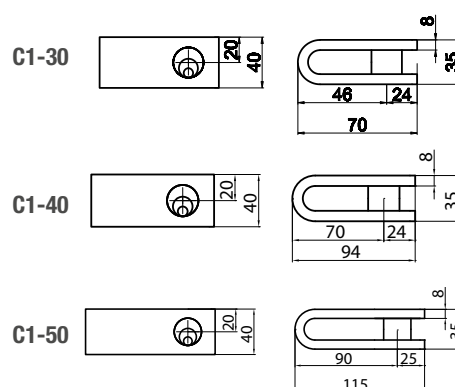
### MODEL C1-30

- 1 padlock
- 3 brass keys

### MODEL C1-40 and C1-50

- 2 padlocks
- 2 latches
- 3 brass keys

## Limitings



\* All padlocks can be supplied with the same key and in different models.

\* All padlocks can be supplied with different keys and a single master key.

\*These padlock models can match the keys with our security locks, mortise locks 60 and 70 and our right and left gate locks.



**C130**  
**C140**  
**C150**

# SECURITY PADLOCKS

POINT KEY

REF	Model	Finishing	Type of key
<b>C130U</b>	30	Zinc-plated and lacquered	-
<b>C130UI</b>	30	Zinc-plated and lacquered	Same key (I)

REF	Model	Finishing	Type of key
<b>C150U</b>	50	Zinc-plated and lacquered	-
<b>C150UI</b>	50	Zinc-plated and lacquered	Same key (I)

REF	Model	Finishing	Type of key
<b>C140U</b>	40	Zinc-plated and lacquered	-
<b>C140UI</b>	40	Zinc-plated and lacquered	Same key (I)

## Packaging

Complete boxes are always supplied. According to cylinder size



**Model C1-30 mm**  
6 units



**Model C1-40 mm**  
3 sets of 2 units



**Model C1-50 mm**  
3 sets of de 2 units

## Box contents

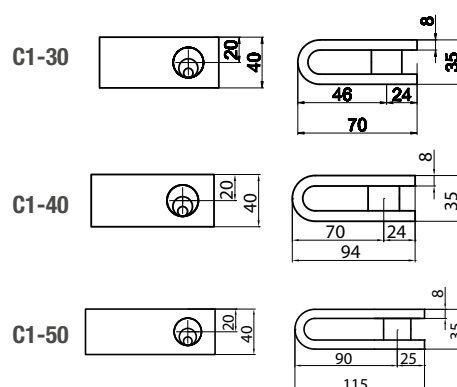
### Model C1-30

- 1 padlock
- 5 brass keys

### Model C1-40 and C1-50

- 2 padlocks
- 2 latches
- 5 brass keys

## Limitings



\* All padlocks can be supplied with the same key and in different models.

\* All padlocks can be supplied with different keys and a single master key.

\*These padlock models can match the keys with our security locks, mortise locks 60 and 70 and our right and left gate locks.



# E6/E7

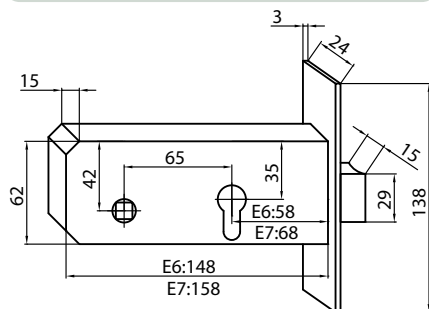
## MORTISE LOCKS

### SERRATED KEY

REF	Finishing	Type of key
<b>E6D</b>	Gold-coloured	-
<b>E6DI</b>	Gold-coloured	Same key (I)
<b>E6N</b>	Nickel-plated	-
<b>E6NI</b>	Nickel-plated	Same key (I)

REF	Finishing	Type of key
<b>E7D</b>	Gold-coloured	-
<b>E7DI</b>	Gold-coloured	Same key (I)
<b>E7N</b>	Nickel-plated	-
<b>E7NI</b>	Nickel-plated	Same key (I)

#### Limitings



#### Packaging



**Model E6 and E7**  
24 units

#### Box contents

- 1 lock
- 1 cylinder
- 1 latch
- 9 screws
- 3 brass keys
- 2 trims



\*All locks can be supplied with the same key and in different models.

\*All locks can be supplied with different keys and a single master key.

\*These locks models can match the keys with our security locks, padlocks and our right and left gate locks.



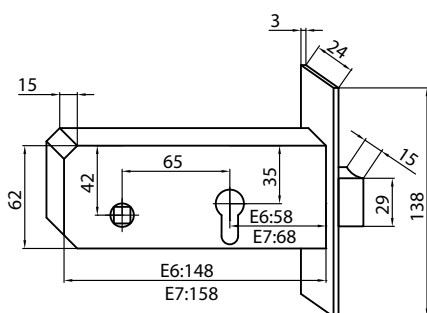
# MORTISE LOCKS

## POINT KEY

REF	Finishing	Type of key
E6DU	Gold-coloured	-
E6DUI	Gold-coloured	Same key (I)
E6NU	Nickel-plated	-
E6NUI	Nickel-plated	Same key (I)

REF	Finishing	Type of key
<b>E7DU</b>	Gold-coloured	-
<b>E7DUI</b>	Gold-coloured	Same key (I)
<b>E7NU</b>	Nickel-plated	-
<b>E7NUI</b>	Nickel-plated	Same key (I)

## Limitings



## Packaging



**Model E6 and E7**  
24 units

## Box contents

- 1 lock
- 1 cylinder
- 1 latch
- 9 screws
- 3 brass keys
- 2 trims



\*All locks can be supplied with the same key and in different models.

\*All locks can be supplied with different keys and a single master key.

\*These locks models can match the keys with our security locks, padlocks and our right and left gate locks.



# 30X30LLD 30X30LLN

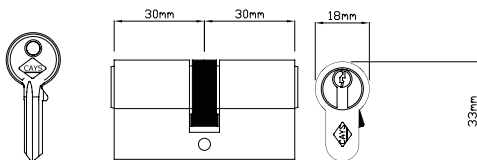
## CYLINDERS FOR LOCKS

SERRATED KEY

REF	Finishing	Type of key
<b>30X30LLD</b>	Gold-coloured	-
<b>30X30LLDI</b>	Gold-coloured	Same key (!)

REF	Finishing	Type of key
<b>30X30LLN</b>	Nickel-plated	-
<b>30X30LLNI</b>	Nickel-plated	Same key (!)

### Limitings



### Box contents

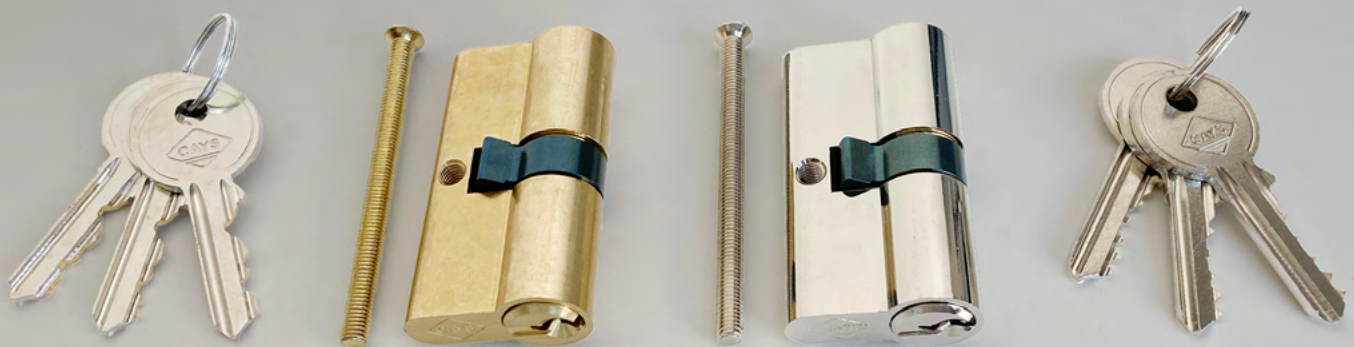
- 1 Cylinder
- 1 Screw
- 3 Brass keys



\*All cylinders can be supplied with the same key and in different models.

\*All cylinders can be supplied with different keys and a single master key.

These cylinders models can match the keys with our security locks, padlocks and our right and left gate locks.



**30X30LLDU**  
**30X30LLNU**

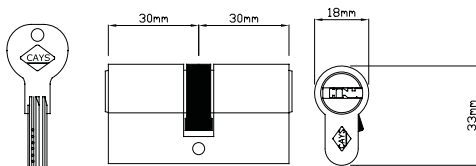
# CYLINDERS FOR LOCKS

## POINT KEY

REF	Finishing	Type of key
<b>30X30LLDU</b>	Gold-coloured	-
<b>30X30LLDUI</b>	Gold-coloured	Same key (I)

REF	Finishing	Type of key
<b>30X30LLNU</b>	Nickel-plated	-
<b>30X30LLNUI</b>	Nickel-plated	Same key (I)

### Limitings



### Box contents

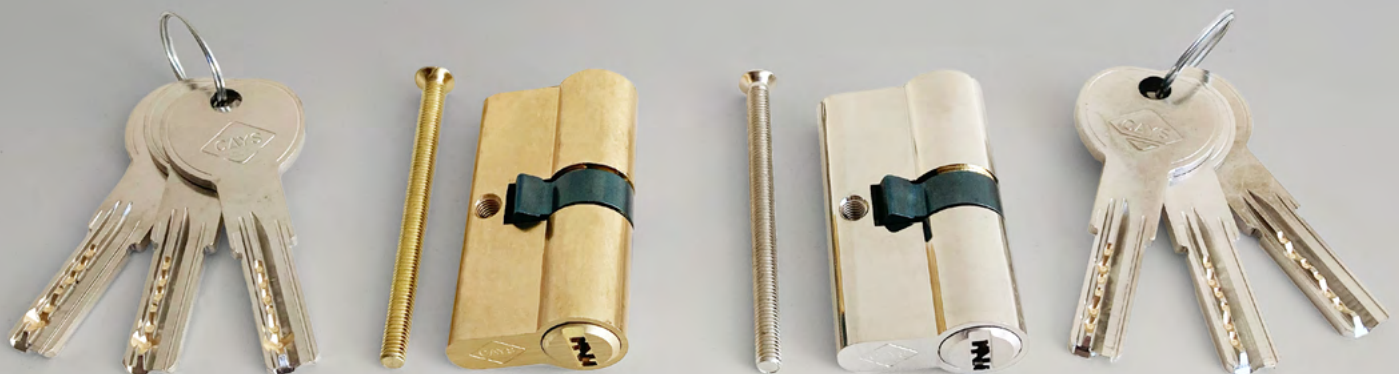
- 1 Cylinder
- 1 Screw
- 3 Brass keys



\*All cylinders can be supplied with the same key and in different models.

\*All cylinders can be supplied with different keys and a single master key.

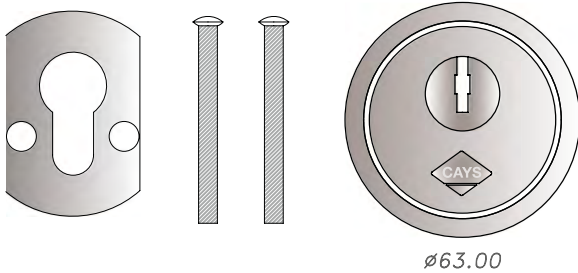
These cylinders models can match the keys with our security locks, padlocks and our right and left gate locks.



# ESC

## SECURITY ESCUTCHEON FOR LOCKS

### Limitings

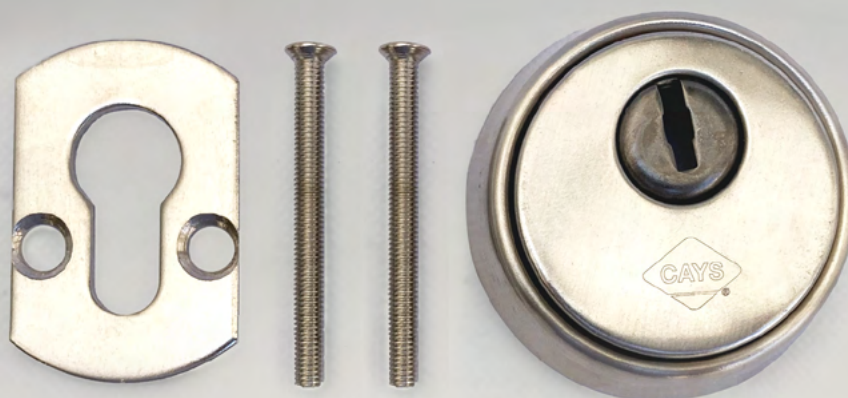


### Box contents

- 1 Trim
- 2 Screws
- 1 Security escutcheon

Additional security solution for doors, increasing the protection of the cylinder against attacks to break or force it.

Includes solid outer ring with embellishing effect to give uniformity to the image of the door.



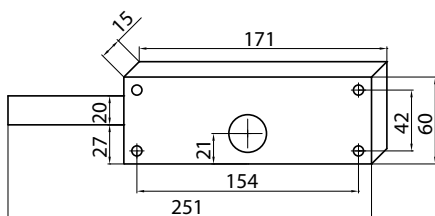
# CL

## LOCKS FOR ROLL-UP DOORS WITH POINT KEY

REF	Guide size	Finishing	Type of key
<b>CL</b>	45	Galvanized	-
<b>CLI</b>	45	Galvanized	Same key (I)

REF	Guide size	Finishing	Type of key
<b>CL60</b>	60	Galvanized	-
<b>CL60I</b>	60	Galvanized	Same key (I)

### Limitings



### Packaging

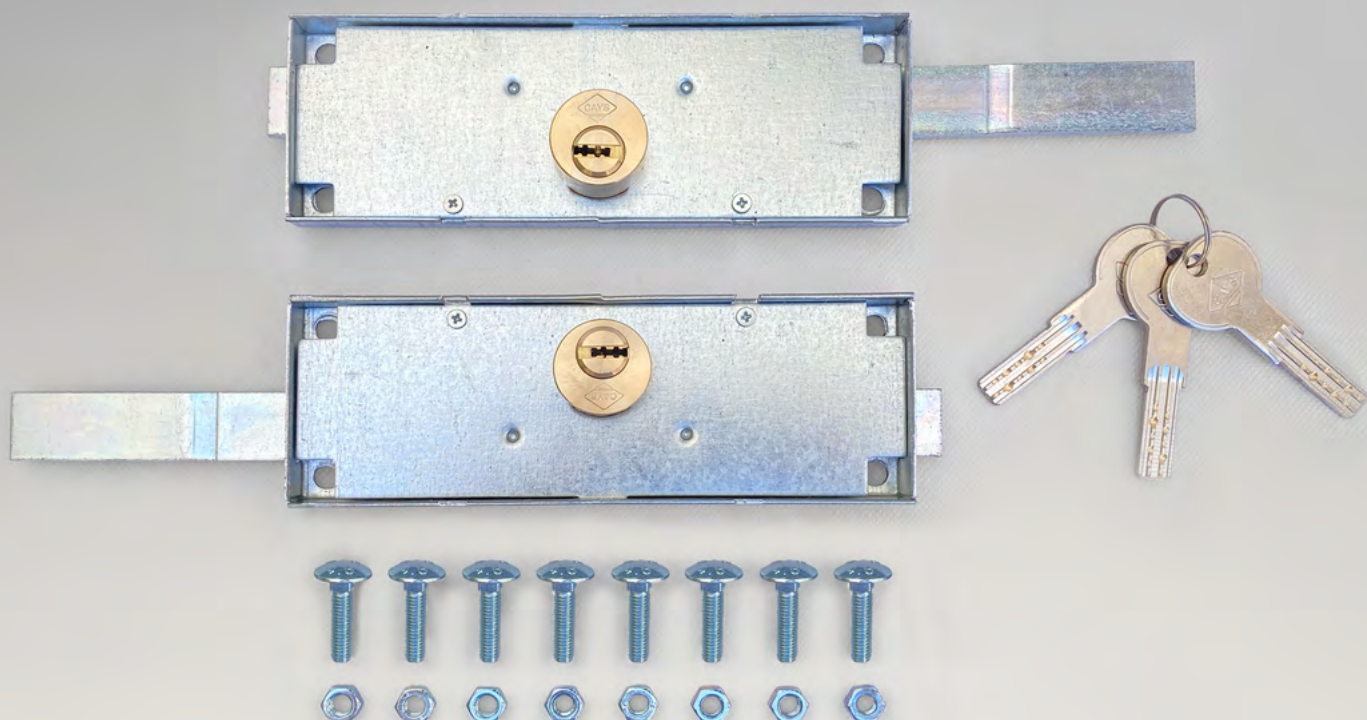


### Box contents

- 2 Locks
- 8 screws
- 8 nuts
- 3 brass keys



\*The locks can be compatible with floor square mortise lock, and both locks can be fitted with the same key.

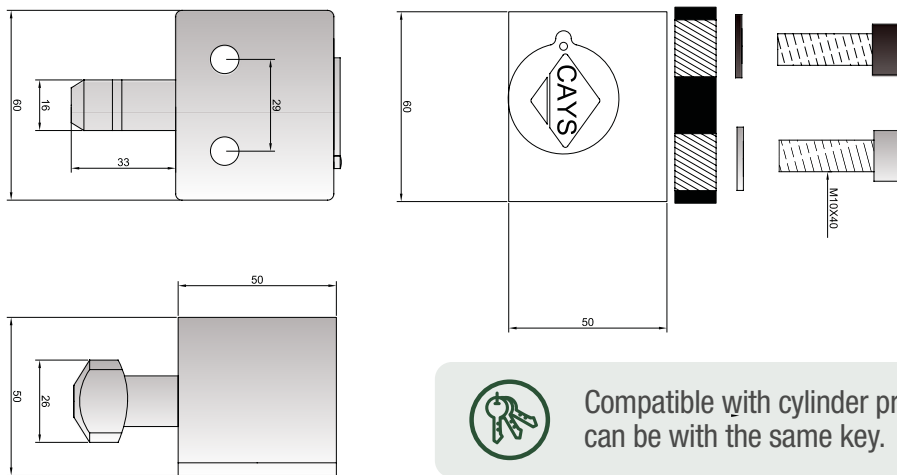


## FLOOR MORTISE LOCK WITH POINT KEY

### SQUARE FORM

REF	Model	Finishing	Type of key
<b>CEP</b>	Square form	Nickel-plated	-
<b>CEPI</b>	Square form	Nickel-plated	Same key (!)

#### Limitings



#### Box contents

- 1 lock body
- 1 lock
- 2 screws
- 2 washer
- 1 adapter
- 3 brass keys



Compatible with cylinder profile of side locks, both locks can be with the same key.

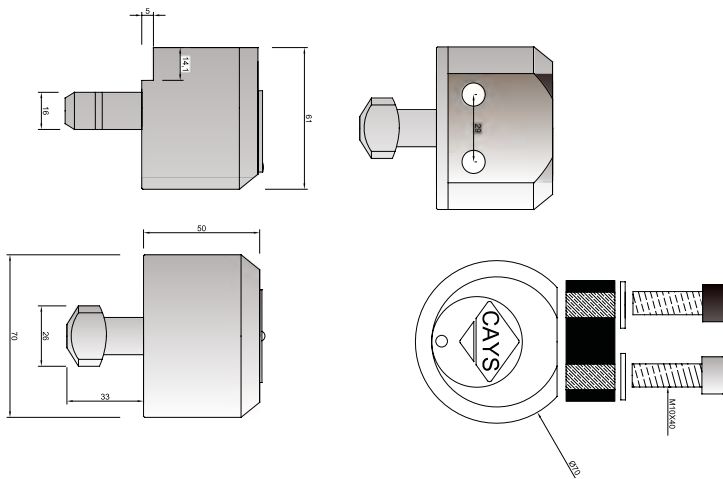


# FLOOR MORTISE LOCK WITH POINT KEY

## CIRCULAR FORM

REF	Model	Finishing	Type of key
<b>CE</b>	Circular form	Nickel-plated	-
<b>CEI</b>	Circular form	Nickel-plated	Same key (!)

### Limitings



### Box contents

- 1 lock body
- 1 lock
- 2 screws
- 2 washer
- 1 adapter
- 3 brass keys



# CB

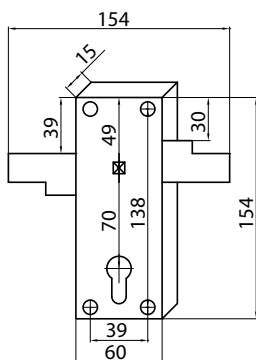
## LOCKS FOR OVERHEAD DOORS

REF	Model	Type of key
CB	Locks for overhead doors	-
CBI	Locks for overhead doors	Same key (I)

### Box contents

- 1 Lock
- 1 Trim
- 2 Handles
- 1 Screw
- 2 Washers
- 1 Spindle
- 3 Brass keys

### Limitings



\*All locks can be supplied with the same key and in different models.

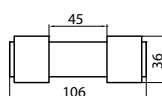
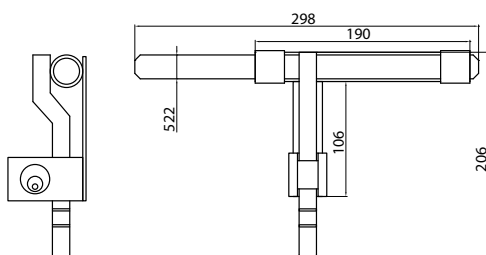
\*All locks can be supplied with different keys and a single master key.

\*These locks models can match the keys with our security locks, padlocks and our right and left gate locks.



REF	Placement	Finishing	Type of key
<b>CI</b>	Left door leaf	Zinc-plated	-
<b>CII</b>	Left door leaf	Zinc-plated	Same key (I)
<b>CD</b>	Right door leaf	Zinc-plated	-
<b>CDI</b>	Right door leaf	Zinc-plated	Same key (I)

### Limitings



### Box contents

- 1 lock
- 1 latch
- 1 padlock
- 3 brass keys



\*All locks can be supplied with the same key and in different models.

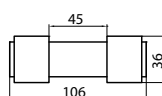
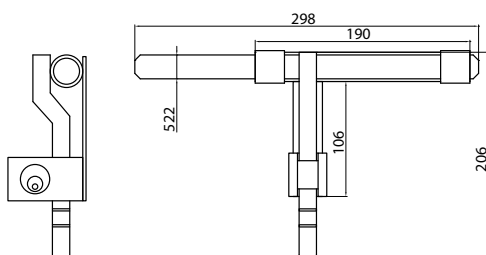
\*All locks can be supplied with different keys and a single master key.

These lock models can match the keys with our security padlocks, mortise locks 60 and 70 and our right and left gate locks.



REF	Placement	Finishing	Type of key
<b>CIU</b>	Left door leaf	Zinc-plated	-
<b>CIUI</b>	Left door leaf	Zinc-plated	Same key (I)
<b>CDU</b>	Right door leaf	Zinc-plated	-
<b>CDUI</b>	Right door leaf	Zinc-plated	Same key (I)

### Limitings



### Box contents

- 1 lock
- 1 latch
- 1 padlock
- 5 brass keys



\*All locks can be supplied with the same key and in different models.

\*All locks can be supplied with different keys and a single master key.

These lock models can match the keys with our security padlocks, mortise locks 60 and 70 and our right and left gate locks.



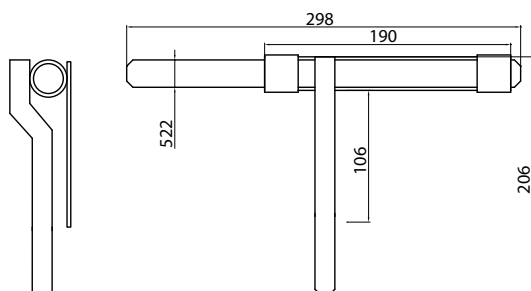
# CS

## LOCK FOR GATE

WITHOUT LOCK

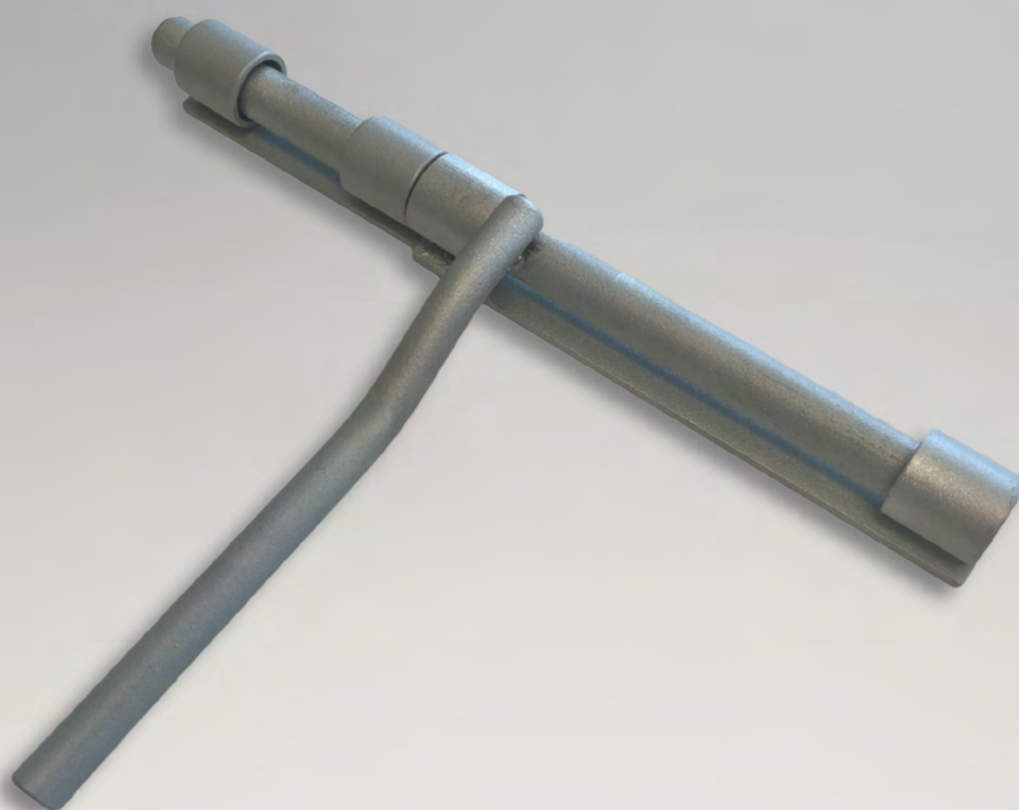
REF	Model	Finishing
CS	Without lock (S)	Zinc-plated

### Limitings



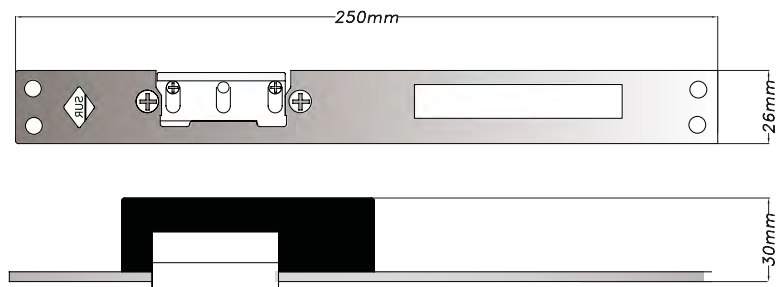
### Box contents

- 1 lock
- 1 latch

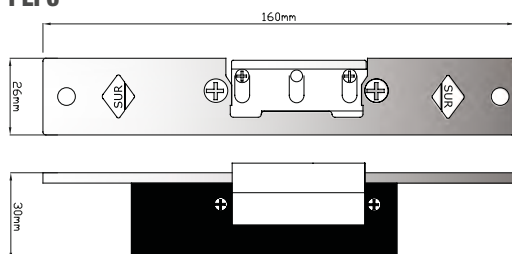


## Limitings

### PEPL



### PEPC



## Box contents

- 1 Electric latch

Mechanical memory so as not to keep on pressing the button.  
Permanent opening after electrical impulse and closing is reactivated once the door is opened.

PEPL



PEPC



# DOORKNOB HANDLES

REF	Model	Finishing	Size
V14	Flat doorknob	Lacquered	60x70 mm
V22	Carved doorknob	Lacquered	60x70 mm

## Finishing

They will be supplied lacquered in black and rust. Other finishes can also be supplied under minimum orders.

## Packaging



**Model V14 and V22**  
10 units

V14



V22



REF
C20P
C20C
C20L
C40P
C40C
C40L
C47
C90

### CODES

P -Diamond point  
C -Circle  
L -Flat

### Packaging



**Model 200 X 200** / 50 units



**Model 400 X 200** / 25 units



**Model 475 X 200** / 25 units



**Model 475 X 900** / 8 units

Complete boxes are supplied.

### Finishing



Steel

Mod. CRT  
200 X 200 P



Mod. CRT  
200 X 200 C



Mod. CRT  
200 X 200 L



Mod. CRT  
475 X 200



Mod. CRT  
475 X 900



Mod. CRT  
400 X 200 P



Mod. CRT  
400 X 200 C



Mod. CRT  
400 X 200 L



## KIT OF IRONWORK FOR OVERHEAD DOORS WITH SPRINGS

### REF SHORT IRONWORK

Door ironwork	Pedestrian door ironwork
HAC	HACP
HBC	HBCP
HCC	HCCP
HCDC	HCDCP

### NORMAL IRONWORK

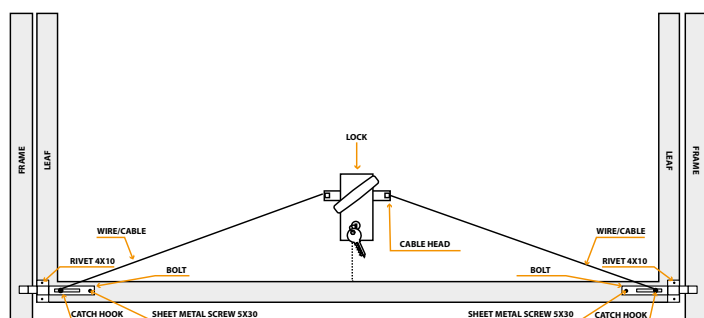
Door ironwork	Pedestrian door ironwork
HA	HAP
HB	HBP
HC	HCP
HCD	HCDP

### LONG IRONWORK

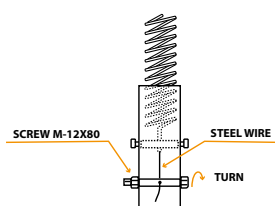
Door ironwork	Pedestrian door ironwork
HAL	HALP
HBL	HBLP
HCL	HCLP
HCDL	HCDLP

### KIT OF IRONWORK FOR OVERHEAD DOORS WITH SPRINGS

#### Outline of locks and bolts installation



Spring tensioner system on installed doors



#### Finishing

##### KIT OF ACCESSORIES FOR DOORS

- 1 Lock model CB
- 2 Bolts
- 2 Bolt cases
- 4 Bolts/tense springs
- 1 Drill 4.5
- 4 Rivets 4x10
- 16 Screws R/CH
- 4 Screws for locks
- 2 Screws for bolts
- 2 Wires/Cables

##### KIT OF ACCESSORIES FOR PEDESTRIAN DOORS

- 1 CAYS lock
- 16 Rivets
- 2 CM120
- 2 Bolt cases
- 1 Handle/doorknob
- 4 Bolts/tense springs
- 1 Drill 4.5 mm.
- 16 Sheet metal screws r/ch

##### NOTE:

- \*Short ironwork, for doors: 1.90m-2.10m HIGH
- \*Normal ironwork, for doors: 2.10m-2.60m HIGH
- \*Long ironwork for doors from 2.60m tall on

Ironworks can be supplied as only the arms and springs without the other accessories.

##### References

- L-Long
- C-Short
- P-Pedestrian



## KIT OF IRONWORK FOR OVERHEAD DOORS WITH SPRINGS

### IRONWORK MODEL ACCORDING TO SIZE

Width Height	200		220		240		260		280		300		320		340		360		380		400	
180	A	A	A	B	A	B	A	B	A	B	A	B	A	B	A	C	B	C	B	***	C	***
190	A	A	A	B	A	B	A	B	A	B	A	B	A	B	B	C	C	C	C	***	C	***
200	A	A	A	B	A	B	A	B	A	B	A	B	B	C	B	C	C	C	C	***	C	***
210	A	A	A	B	A	B	A	B	A	C	A	C	B	C	B	C	C	C	C	***	C	***
220	A	A	A	B	A	B	B	C	B	C	B	C	B	C	B	C+D	C	C	C	***	C	***
230	A	B	A	C	A	C	B	C	B	C	B	C	B	C	C	C+D	C	C+D	C	***	C+D	***
240	A	B	B	C	B	C	B	C	B	C	B	C+D	C	C+D	C	C+D	C	C+D	C	***	C+D	***
250	A	B	B	C	B	C	B	C	B	C+D	C	C+D	C	C+D	C	C+D	C+D	C+D	C+D	***	C+D	***
260	A	B	B	C	C	C	C	C	C	C+D	C	C+D	C	C+D	C+D	C+D	C+D	***	C+D	***	C+D	***
MAXIMUM WEIGHT FOR DIFFERENT FURNITURE PIECES																						
A - 60 KG							B - 70 KG							C - 90 KG							C+D - 110 KG	

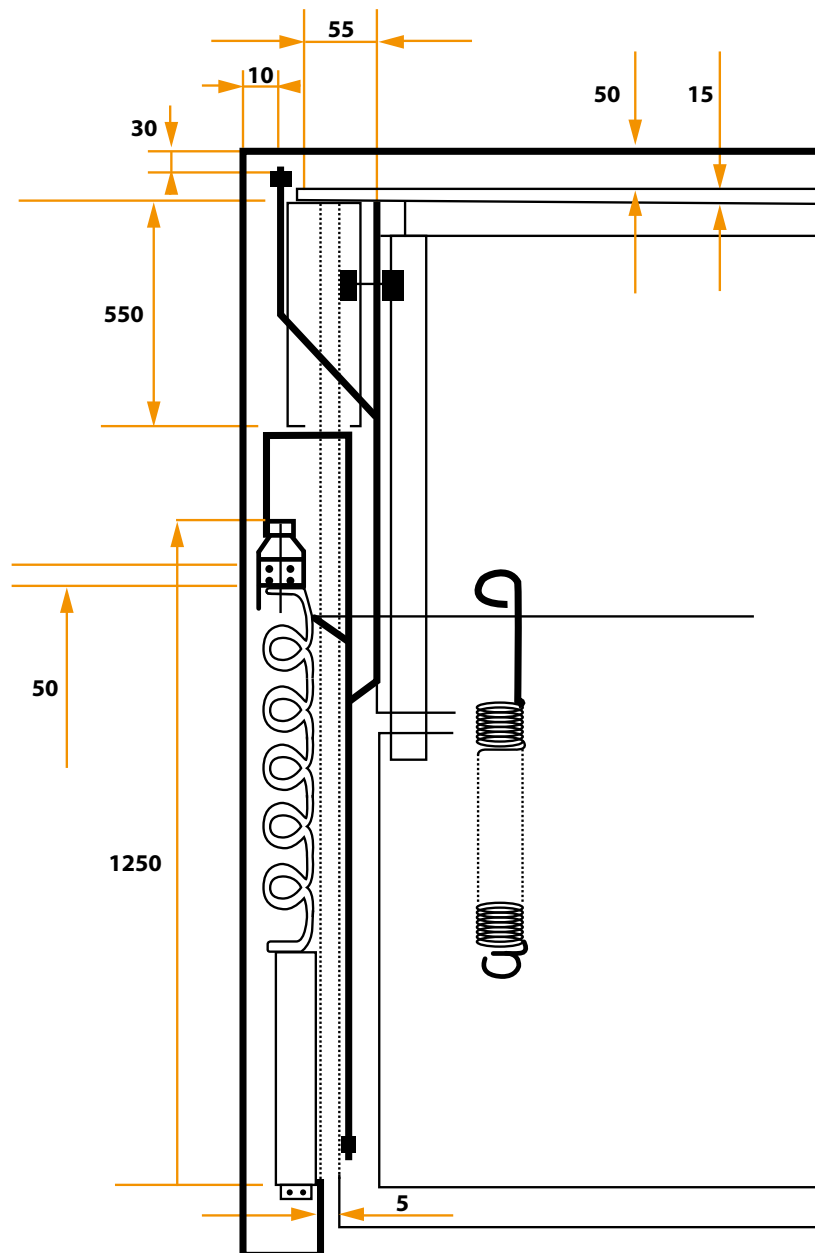
● Grey: doors WITHOUT wicket

● Red: doors WITH wicket

\*\*\* Not advisable

## KIT OF IRONWORK FOR OVERHEAD DOORS WITH SPRINGS

### Limitings



\*Maximum spread 1.170 mm

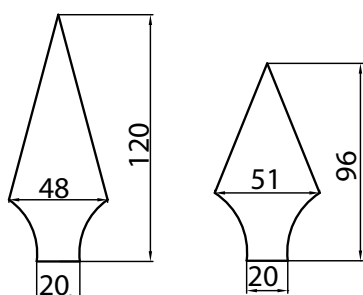
\*All these measures are specified in mm

# L

## SPEARHEADS

REF	Model	Finishing	Size
L1	Large	Steel	120 mm
L2	Small	Steel	96 mm

### Limitings

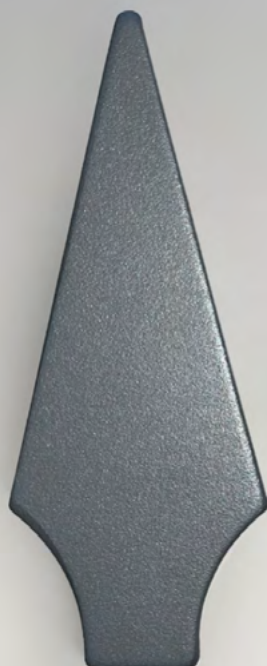


### Packaging



**Model L1 and L2**  
200 units

Mod. L-1



Mod. L-2





P.I. Piedra Hincada, C/ Piedra Hincada Tres, Nave 2  
41500 Alcalá de Guadaira · Sevilla (España)  
Apdo. de Correos, 152  
T. +34 95 562 70 15  
info@cays.es

**[www.cays.es](http://www.cays.es)**



UNIÓN EUROPEA

**FONDO EUROPEO DE  
DESARROLLO REGIONAL**

UNA MANERA DE HACER EUROPA